

MARINETEK 

MARINAS & FLOATING SOLUTIONS







MORE THAN MARINAS, WE DELIVER PEACE OF MIND FOR DECADES TO COME

We believe a state of the art marina should guarantee long lasting safety, comfort and reliability for at least half a century. Our marinas can be trusted through changing times, in even the most challenging conditions. Our loyal customers understand this, and benefit from the incomparable quality we provide. It is quality you don't have to worry about, quality that your customers will know you for.

By choosing us, you choose ideal means for stable and smooth marina operation. We make marinas that you can trust, and be proud to own.

CONTENT

Our Top Marina References	14
Marina Kornati	16
Aker Brygge Marina.....	18
Pier 66 Marina.....	20
Palm Jumeirah Marinas	22
Grand Harbour Marina	24
Palm Harbor Marina.....	26
Port Louis Marina	28
Mandalina Marina.....	30
Limassol Marina	32
Harborage Marina	34
Port Pierre Canto.....	36
Saguenay Breakwater	38
Çeşme Marina	40
Mid-Harbour Small Boats Marina.....	42
ACI Slano Marina	44
Port Hercules	46

Phuket Yacht Haven.....	47
West Harbor Breakwater.....	48
Volvo Ocean Race Marina.....	49
Marina Mangalia.....	50
Sune Carlsson Båtvärv	51
Svanemøllehavnen	52
Porto Carras Marina.....	53
Sochi Grand Marina.....	54
Sopot Marina.....	55
Itämeren Portti Marina.....	56
New Port Keilalahti.....	57
Marina Kamien Pomorski.....	58
Böbs-Werft Marina	59
Longkou Marina.....	60
Royal Hong Kong Yacht Club	61
Taqah Fishing Marina	62
Royal Yachts.....	63



Örö Fortress Island	64
Kivenlahti Boat Club Marina	65
Marina Agana	66
Lučica Batala	67
SCT - Marina Trogir	68
Caroline Bay Marina	69
Port Takola Marina & Yard	70
Portonovi Marina	71
Shipyards Marina	72
Aci Rovinj Marina	73
Thamesport Marina	74
Ana Marina	75

Floating Solutions.....	79
Swimming Arenas	80
Allas Sea Pool.....	82
Service Buildings.....	84


Seaplane Stations.....	86
Floating Houses.....	88
Sports Centres.....	90
Special Solutions	91

Marina Products	93
All-Concrete & Heavy Duty Pontoons	94
Premier & Super Yacht Pontoons.....	96
Breakwater Pontoons.....	98
Aluminium Pontoons	100
System Pontoons.....	102
Equipment & Services	104

Marinetek Corporation	106
Sales Offices	107



Port Louis Marina, Grenada, West Indies



WE DESIGN AND BUILD MARINAS THAT MEET UNIQUE REQUIREMENTS

OUR “FLOAT-HOW” IS WHAT RAISES US ABOVE THE REST

We understand all waters. That is where our passion lies. We know seas, oceans, lakes and rivers, and their unique challenges. We’ve dealt with currents, tides, winds and waves – the Arctic to the tropics and all over the world. Every marina is different, and we know how to achieve a perfect fit.

We also understand your business, and know what you need to be successful. Our job is to listen, and make every detail serve the big picture by building marinas that take everything into account. We provide a complete service for a successful process, from start to finish, and this is included in your investment.

That is what our expertise is about, and what our experience has perfected. We call it “float-how”. It is our unique combination of skill and knowledge.



Palm Jumeirah Marinas, Dubai, United Arab Emirates

OUR INTERNATIONAL SUCCESS IS CAST IN CONCRETE

We have mastered the art of building exceptional marinas out of concrete. Utilising big units of high strength concrete with thick walls and steel reinforcements, we achieve a unique capability to distribute mooring loads to the seabed.

Strong and long lasting, concrete is the choice of practically every serious marina and waterfront developer. We deliver the benefits that concrete structures provide to marinas of all purposes and sizes.

Our concrete solutions offer incomparable durability with practically no need for maintenance. You will retire one day, but your concrete marina will continue to offer reliable service.





Limassol Marina, Cyprus



Palm Harbor Marina, West Palm Beach, Florida, USA



TRUE PARTNERSHIPS THAT LAST A LIFETIME

We are proud of our marinas and our proven track record, but even more proud of the lasting relationships we build with our customers. We do it by listening, learning about their culture and exchanging insights. There isn't a requirement or special request that our in-house designers and engineers haven't been able to fulfil in the 30 years we have been in the business.

Our 12 factories around the world are used to meeting the highest quality criteria, even with demanding schedules.

YOU CAN TRUST OUR WORD. AND OUR CUSTOMERS.

Our customers comprise some of the finest, most demanding marina experts you will find. We trust them, and their testimonies, to tell you exactly why you should join them as part of the worldwide Marinetek family.



SCT Brodotrogir Marina, Trogir, Croatia



Kristijan Pavić

CEO, President of the Board,
Adriatic Croatia International Club

Adriatic Croatia International Club (ACI Club) is the biggest marina management company in Croatia and has 22 marinas all along the beautiful Croatian coast. For many years, ACI Club has found Marinetek to be a reliable partner and its “know-how, float-how” approach has always assured us of the best possible solutions, technology and quality. With Marinetek products, we can offer our customers a full service marina with no worries regarding quality or fears that equipment will not work properly. **See ACI Slano Marina page 44 and ACI Rovinj Marina page 73.**



Mathieu Salomon

Technical Director,
Camper & Nicholson's Marinas

As recently appointed C&N Technical Director, and having worked with Marinetek since January 2008, we have grown to acquire a long standing relationship in the design and construction of Marinas worldwide. Built using Marinetek heavy duty and all concrete pontoons, the wealth of knowledge, engineering expertise, and competent individuals we deal with on a regular basis, all auger well for continued future collaboration on several projects in more challenging environments. For examples of new Marinas recently completed or currently in build, designed entirely by C&N and supplied by Marinetek. **See Grand Harbour Marina page 24, Port Louis Marina page 28, Limassol Marina page 32, Cesme Marina page 40 and Ana Marina page 75.**



Mike Ward

Managing Director,
Marina Projects Ltd

Marina Projects Ltd was appointed by the client to design and procure the Portonovi Marina installation. The scope of the marina works required a 180m floating breakwater, superyacht berths for vessels up to 70m and a general marina installation. Marinetek were successful during a competitive tender because of the close attention they paid to the tender requirements, including the Employer's Specification. The pontoon solutions proposed delivered against, and in places exceeded, the requirements of the Performance Specification at a competitive price. Our evaluation of the combination of quality and price led to a clear recommendation to appoint Marinetek.

Throughout the programme of manufacture and installation Marinetek communicated clearly and were professional, flexible and accommodating. Not only did they take our design objectives and tender requirements through to a 5-star marina installation but they also delivered on time and under budget. **See Marina Portonovi page 71.**




Bill Green

Director
Marina Solutions
International Ltd

Going back in time, 17 years in fact, I first used Marinetek products for the development of Grand Harbour Marina, Malta, which was completed in 2002. That installation continues to be serviced by Marinetek and from a serviceability and integrity point of view it remains as good as the day it was commissioned. Probably the most notable installation I have worked on using Marinetek's products was the 650 berth Limassol Marina in Cyprus. Marinetek's co-operation with me on some innovative design improvements led to what I believe is one of the best examples of a marina installation one could wish to see. As a long standing consultant to the industry, with a background in both design and operations I have entrusted Marinetek for several of my Client's marina fit outs. Through the design and procurement processes, I have always received first class support from Marinetek, and the end result for my Clients has always been one of pride and satisfaction. Now in my role as a founding partner in Marina Solutions International, I look forward to continuing what has, for me, been a very productive relationship with Marinetek.



Palm Harbor Marina, West Palm Beach, Florida, USA



RESULTS THAT STAND OUT, ALL AROUND THE WORLD.

Over the past 20 years, we have delivered more than 2 000 marinas in 50 countries. We are proud of this unbeatable international track record. It is an endorsement of the high quality we provide.

You will find selected marina references on the following pages, and we will be happy to provide you with more information.



KORNATI MARINA

Biograd na Moru, Croatia

FACTS

Capacity of the marina extension: 750 berths

Products: Heavy Duty Pontoons

Customer: Ilirija, Biograd

Delivered by: Marinetek Adriatic

Year of completion: 2016/2017



Marina Kornati, one of the biggest and busiest marinas in Croatia, is undergoing a full reconfiguration and rebuild while remaining open and fully occupied. Operating with a full turnkey contract, Marinetek has been tasked to remove 30-year-old fixed concrete pile and beam jetties and replace them with a floating pontoon system. Four jetties to the south and two in the centre of the marina have been demolished and disposed of, one by one, and replaced with 400 m of pontoons, along with mooring systems and equipment. Boats were transferred from old to new as efficiently as possible. The pontoons are anchored by chains and configured for a Mediterranean mooring arrangement. In the second stage, Marinetek will replace five fixed jetties in the west of the marina with 525 m of floating pontoons.

Marina Kornati is a highly popular nautical tourism centre located on the Adriatic Sea near the Kornati islands and Telašćica Bay. The marina hosts one of the area's biggest floating boat shows and over 40 sailing regattas from February through to December every year.



Marina Kornati is an impressive centre of nautical tourism in northern Dalmatia [left]. Newly refurbished pontoons continue the Mediterranean mooring arrangement.



Marinetek delivered and installed 29 Heavy Duty pontoons with chain mooring systems, with stainless steel mooring bollards and Mediterranean moorings for 211 yachts up to 24 meters.



AKER BRYGGE MARINA

Oslo, Norway

FACTS

Capacity of the marina: 240 berths up to 23 m

Products: 5300K Series Breakwaters, Super Yacht and Heavy Duty Pontoons, Mooring Fingers

Customer: Norwegian Property ASA

Delivered by: Marinetek Finland with Nordocks AS, Norway

Specialities: Rolec power pedestals, 15 m wide main walkway, Marinetek Mooring System

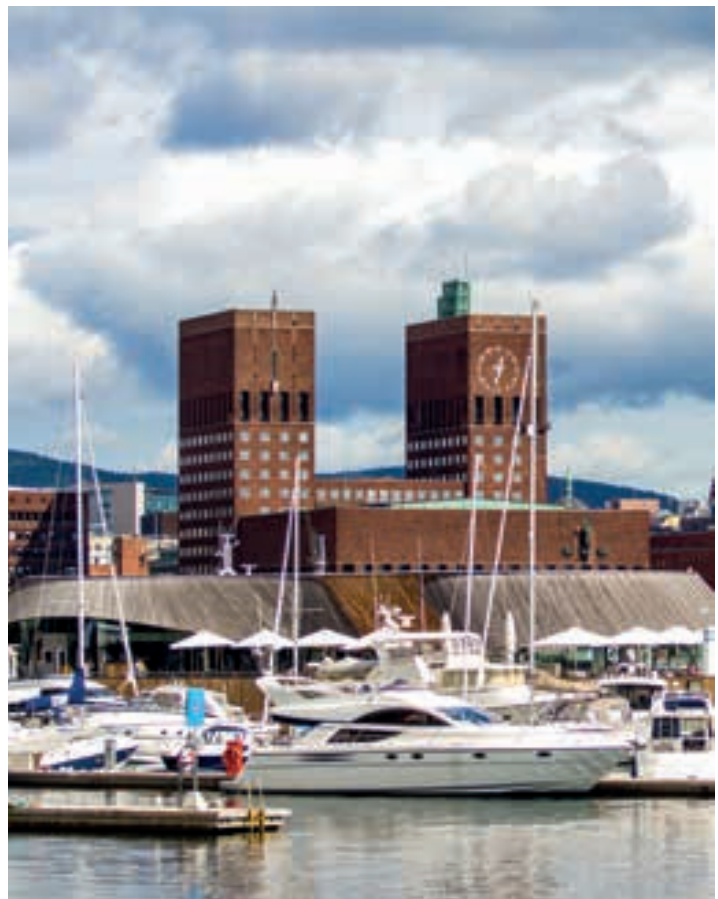
Year of completion: 2013



Aker Brygge features a 15 m wide floating main walkway constructed of 5 m wide Super Yacht floats that form a huge 1 500 m² terrace. The terrace, with its café, is a fabulous new open leisure space for locals and visitors to enjoy.

Aker Brygge Marina has created a new hub for Aker Brygge, which is Oslo's premier seafront visitor attraction. It was built by Marinetek in a single phase using 5 m-wide Super Yacht pontoons and 5 m-wide breakwater sections. The Super Yacht Pontoon, used in projects such as Palm Jumeirah Marina and Port Hercules, was launched in Scandinavia via this project. Aker Brygge features a generously proportioned 15 m wide floating main walkway with a 5 m wide pontoon extension. All berths within the marina basin are 3 m in pontoon width with mooring fingers.

Work was undertaken in co-operation with Marinetek's Norwegian distributor, Nordocks, and all pontoons were manufactured at Marinetek factories in Finland, Sweden and Latvia. Production started in June, installation commenced in October and completion was achieved to schedule in December 2013. The Aker Brygge site attracts around 12 million visitors every year and is thus a very high profile showcase for Marinetek.



Aker Brygge Marina was the biggest marina project in Europe in 2013. The location in the heart of Oslo is hard to beat and 12 million visitors head to the site every year.

PIER 66 MARINA

Fort Lauderdale, USA

FACTS

Capacity of the marina: 50 berths up to 90 m

Products: Super Yacht Pontoons

Customer: ECO Building Solutions for marina operator
LXR Luxury Marinas

Delivered by: Marinetek North America, USA

Specialities: Concrete pile mooring

Year of completion: 2014





Pier 66 Marina is located in front of the Hyatt Regency Hotel on the Intracoastal Waterway. It enjoys good access to the sea.

Pier 66 Marina, a high-end facility at the Hyatt Regency Hotel on the Intracoastal Waterway was redeveloped in 2014 with emphasis on megayacht facilities. Benefiting from the deep water of adjacent Port Everglades, the marina has a range of slips to accommodate various sized vessels up to a maximum of 90 m. Marinetek supplied floating docks that were designed to avoid impact to seagrass and take wind, wave, tidal current and storm surges into account.

The docks are wide and extremely stable with a high freeboard of 0,6 m and special attention was paid to utilities. Some run in the top access trough, which runs down the centre of the dock, and others run in pre-cast PVC sleeves. There are no utilities on the outside of the docks where they could become damaged from exposure to salt water. Upland amenities at the marina include a new Captains Lounge with state-of-the-art TV and sound systems, high speed internet, three restaurants and all the amenities of the Hyatt Regency Hotel.

PALM JUMEIRAH MARINAS

Palm Jumeirah, Dubai, United Arab Emirates

FACTS

Capacity of the marina: 522 berths for 10-30 m yachts

Products: Super Yacht and Heavy Duty pontoons, Super Yacht Fingers

Customer: Nakheel, Dubai/Island Global Yachting

Delivered by: Marinetek MEA with Target Marine, UAE

Specialities: 4 Floating Service Buildings, coloured concrete composite coating, FRP service channel decks, Seaflex mooring, Rolec power pedestals, curved main spines

Year of completion: 2007





The Palm Jumeirah Marinas have been built to the highest standards and pontoons feature stainless steel reinforcement and plastic coating. The pontoons are moored by no. 330 Seaflex units, secured to concrete anchor blocks on the seabed.

Purposely positioned on the east and west sides of the iconic Palm Jumeirah's trunk, this 522-berth marina held the record in 2007 as the biggest budget marina in the world. It accommodates yachts of 10 to 30 m in length and the berths are evenly divided, with 261 in each basin. Marinetek's extra wide and stable concrete pontoons provide an extraordinary level of comfort for marina guests and set a new standard for marinas in the UAE.

Berths at Palm Jumeirah are of generous width to suit modern yachts and finger pontoons provide convenient alongside access with high tech utilities, discrete LED illumination, underwater lighting and designer fixtures and fittings. Each basin benefits from two fully equipped floating utility buildings. The marina is managed by Nakheel Marine and, as part of The Palm, has become one of the world's most recognisable landmarks.



GRAND HARBOUR MARINA

Vittoriosa, Malta

FACTS

Capacity of the marina: 250 berths up to 135 m

Products: Breakwaters, Super Yacht and Heavy Duty Pontoons

Customer: Camper & Nicholson's Marinas

Delivered by: Marinetek Finland with Intermarine, UK

Specialities: Deep-water Seaflex mooring with concrete sinkers, Rolec power pedestals

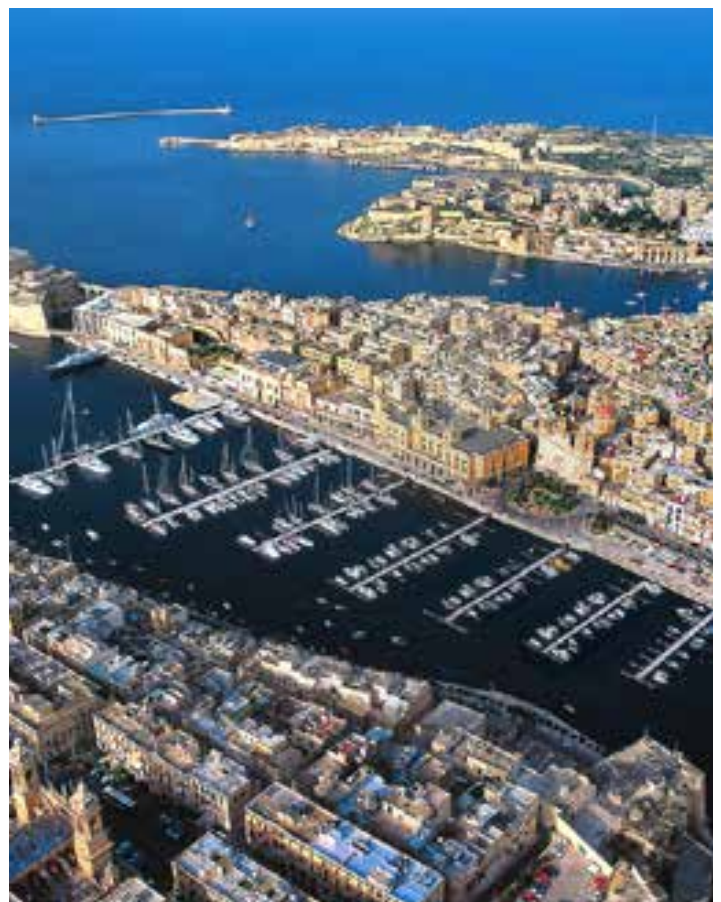
Year of completion: 2003



Grand Harbour Marina in the hub of Malta has one of the finest marina locations in the world and a diverse customer base, from traditional wooden boats and modern yachts to superyachts.

One of the finest marina locations in the world, Malta is rich in history, culture and heritage yet modern and cosmopolitan. Grand Harbour is the flagship facility of Camper & Nicholson's Marinas and nestles in the heart of Vittoriosa on the east coast with a breathtaking backdrop of historic waterfront buildings. Although vessels of all sizes are accommodated, the marina is located within one of the largest deep water natural harbours in the world. It is thus perfect for superyachts and can moor vessels up to 135 m alongside and 100 m superyachts stern-to.

Grand Harbour is one of the few marinas in the Mediterranean to be fully International Ship and Port Facility Security (ISPS) compliant and has first class services. A wide variety of restaurants, bars, shops and the famous Casino di Venezia are within walking distance. The marina is an established cruising destination for visiting yachts throughout the Mediterranean season.



The 250 berth marina with Marinetek's Premier and Super Yacht Pontoons is located within one of the largest deep water natural harbours in the world. It is thus perfect for superyachts up to 135 m.



PALM HARBOR MARINA

West Palm Beach, Florida, USA

FACTS

Capacity of the marina: 209 slips for 18–76 m yachts

Products: Super Yacht Pontoons, Super Yacht Fingers

Customer: Chase Enterprises LLC

Delivered by: Marinetek North America with Murphy Construction, USA

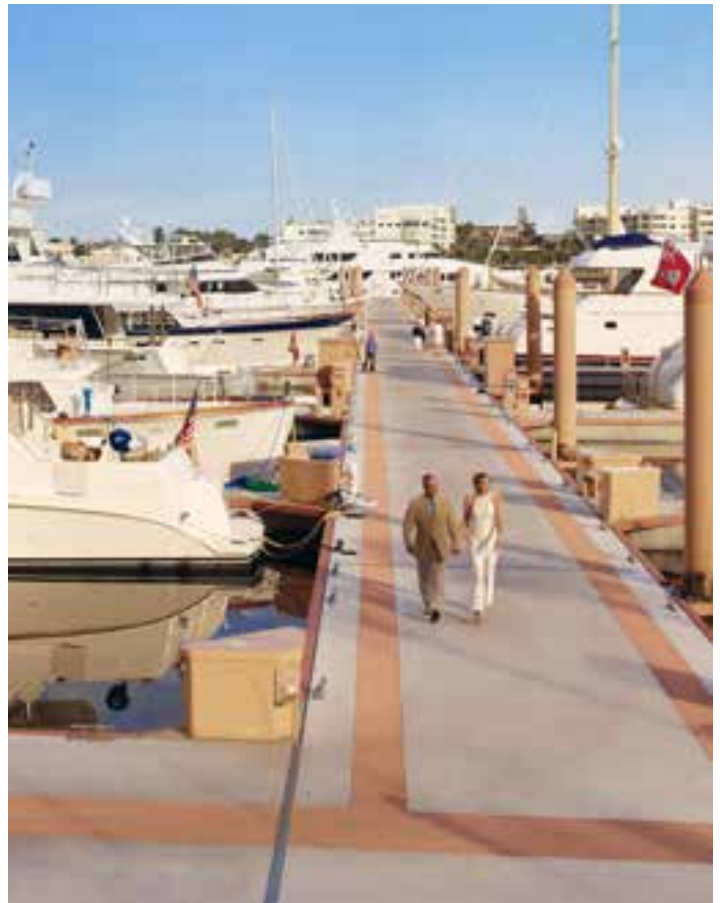
Specialities: Coloured concrete, FRP service channel decks, pile mooring, fully equipped

Year of completion: 2010 [extension 2015]



Designed as a first class facility for owners, captains and crew, this South Florida marina was completed in 2010 but has since undergone expansion to further boost its superyacht slips. The extension to the Marinetek floating concrete pontoon system provides nine extra slips, six of which have 48,7 m long finger pontoons for vessels up to 76,2 m in length and three have 36,6 m long fingers for yachts up to 45,72 m. The slips are 12 m wide to give megayachts and large catamarans ample room for docking.

Dockside facilities are exceptional throughout and include three phase power, water, WiFi, cable TV, a fire-suppression system and in-slip pump-out. A solar powered navigational beacon is positioned on the end of the outer dock. Located at the heart of the Palm Beaches, the marina has been carefully designed and offers an extremely high level of customer service.



The walkways are 4,5 m wide Super Yacht Pontoons with coloured concrete and FRP decking for service channels. The pontoons are moored by piles.



The marina has been carefully designed and offers an extremely high level of customer service and was elected as Marina of the Year 2010 in Florida.

PORT LOUIS MARINA

Grenada, West Indies

FACTS

Capacity of the marina: 170 berths up to 90 m

Products: Super Yacht and Heavy Duty Pontoons,
Super Yacht and Concrete Fingers

Customer: Camper & Nicholson's Marinas

Delivered by: Marinetek Finland

Specialities: Seaflex mooring, Rolec power pedestals

Year of completion: 2009 – 2010



Photograph: Courtesy of Camper & Nicholson's Marinas



Port Louis has a separate area for mega yachts up to 90 m in length. The dock system comprises Super Yacht Pontoons moored by Seaflex.

Situated in a natural lagoon on the leeward side of the beautiful ‘Spice Island’ of Grenada, Port Louis Marina sits safely below the hurricane belt. Located opposite the island capital St Georges, it is an ideal base for boat owners wishing to explore the Grenadines and the eastern Caribbean.

The marina has 170 slips for boats up to 90 m and up to 6 m draft, and operators Camper & Nicholsons Marinas offer slips for sale as a permanent base as well as on an annual, seasonal and visitor rental basis. Investment has been made on all on-site facilities to deliver a mix of the luxurious and the practical. A private swimming pool and the new ‘1782 Restaurant & Bar’ are complemented by luxury washrooms, a serviced launderette and provisioning delivery service. There are technical service operators at the marina and a nearby chandlery, and boat owners also benefit from a comprehensive local commercial infrastructure. This includes nearby boatyards with a 70 ton boat hoist.



MANDALINA MARINA

Šibenik, Croatia

FACTS

Capacity of the marina: 429 berths up to 140 m

Products: Heavy Duty Pontoons, Breakwaters, Mooring Fingers

Customer: Nautical Centre Prgin, Šibenik, Croatia

Delivered by: Marinetek Adriatic

Specialities: Deep water Seaflex installation, Rolec power pedestals

Year of completion: In stages 2006-2012



D-Marin Mandalina Marina is located on the beautiful Dalmatian coast in the historic town of Šibenik and is positioned between two national parks: Kornati archipelago and Krka waterfalls. It offers 429 deep water slips and 50 dry berths and has an outstanding range of on-site conveniences including restaurants, grocery store, chandlery and top class sanitary facilities for luxury yacht owners, captains, crew and guests. It also benefits from access to the services of an adjacent shipyard.

The megayacht marina has been expanded in stages and now offers 79 berths for vessels up to 140 m. There is unlimited draft and the marina has hosted a huge variety of the most prestigious yachts cruising to and from the Croatian Adriatic. It is the only premier superyacht destination in Croatia. An associated resort hotel of striking architectural design with exceptional seafront views opened in 2015.



Marina Mandalina is well situated in the middle of the Croatian coastline and now boasts berths for mega yachts up to 140 m in length.



All the pontoons were manufactured locally in Marinetek Adriatic's factory and moored in deep waters by Seaflex.

LIMASSOL MARINA

Limassol, Cyprus

FACTS

Capacity of the marina: 650 berths up to 115 m

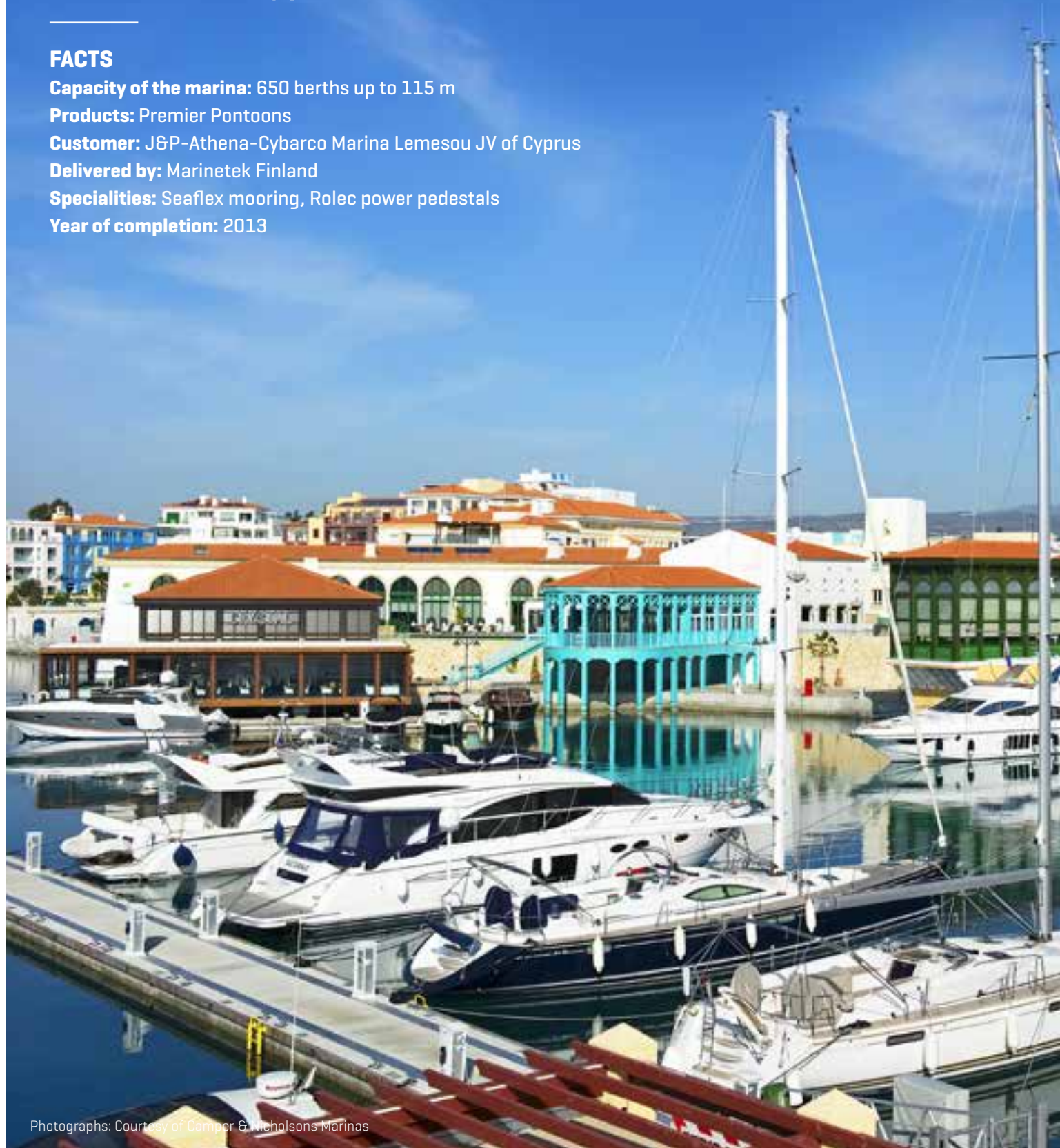
Products: Premier Pontoons

Customer: J&P-Athena-Cybarco Marina Lemesou JV of Cyprus

Delivered by: Marinetek Finland

Specialities: Seaflex mooring, Rolec power pedestals

Year of completion: 2013



Photographs: Courtesy of Camper & Nicholsons Marinas



The pontoons are custom-designed Premier units with integrated open top channels and are moored by Seaflex.

Limassol Marina is styled to become a premier destination in the eastern Mediterranean and its most exclusive waterfront development. Designed by a world-renowned team of architects and engineers, it combines elegant residences and a state-of-the-art marina with exclusive restaurants and shops, to create a lifestyle based around the sea. The 650-berth marina blends seamlessly with the city's historic harbour, old town and medieval castle.

Marinetek used its Premier Pontoons, manufactured at its Croatian factory, to create the floating system and each berth has individual water and electricity, as well as IPTV, high-speed internet, telephone and WiFi access. Boat owners also benefit from an on site boatyard and all the delights of nearby Limassol - "the town that never sleeps". Limassol Marina is operated and managed by Camper & Nicholson's Marinas, one of the world's oldest and most prestigious yachting business names, in partnership with Francoudi & Stephanou Marinas.



HARBORAGE MARINA

St. Petersburg, FL, USA

FACTS

Capacity of the marina extension: 34 berths for yachts up to 60 m

Products: Breakwaters, Super Yacht Pontoons and Fingers

Customer: Safe Harbor Marinas

Delivered by: Marinetek North America, USA

Specialities: Floating aluminium pontoon carrying all utilities out to the new expansion, designed for hurricanes

Year of completion: 2016



Floating concrete megayacht docks (left) complement the original marina system (above).

Safe Harbor Marinas, the largest owner and operator of marinas in the USA, responded to the increased demand for superyacht berths on Florida's west coast by contracting Marinetek to design and build a section of bigger pontoons at The Harborage Marina, St Petersburg. The impressive extension includes four side-tie moorings for yachts up to 60 m and ten berths for vessels up to 18 m. Marinetek built a 4 m wide outer floating breakwater to protect leeward pontoons from incoming wave energy from the bay. In order to connect the new docks to the original floating marina system, which was of different design and freeboard, Marinetek installed aluminium transition ramps.

The expansion has brought the berth count to 355 making The Harborage Marina one of the largest marinas on the west coast of Florida and the perfect stop-over for large yachts cruising Tampa Bay. It offers good upland amenities, including a captains' lounge and swimming pool, and is within easy walking distance of central St Petersburg and its recently revitalised waterfront.



Boaters can easily access the good upland amenities via a Marinetek access bridge.



PORT PIERRE CANTO

Cannes, France

FACTS

Capacity of the marina: 600 berths up to 90 m

Products: Heavy Duty Pontoons

Customer: The City of Cannes

Delivered by: Marinetek Finland

Specialities: Chain and pile mooring, adjustable mooring cleat fixing system, hardwood decking

Year of completion: 2015

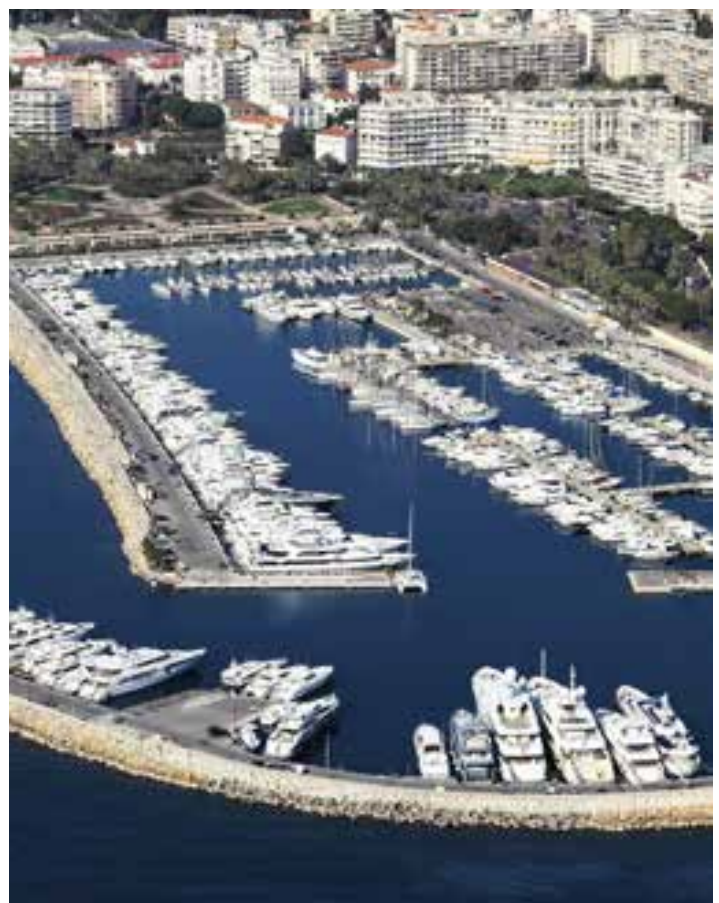


When Port Pierre Canto opened for business in 1964/1965, it made history as the first leisure boat marina in France and became a catalyst for marina development in the region. From the outset, it attracted the most demanding customers in the Mediterranean and aimed to offer high levels of service. In the same spirit, the City of Cannes – its current owner/operator – has sought to renew facilities in order to meet the highly discerning needs of superyacht owners and crews, now and in the future.

In a two-phase project, Marinetek delivered Heavy Duty concrete pontoons in a newly designed marina basin. All units were manufactured in Marinetek's Latvia factory and feature hardwood decking and a special mooring cleat fixing system that allows for universal adjustment. The pontoon system offers excellent life cycle costs and can be reconfigured if necessary in the future in order to accommodate even larger superyachts.



All-Concrete floats feature hardwood decking and a special mooring cleat fixing system that allows for universal adjustment.



Port Pierre Canto, the first leisure boat marina in France, now has modern Marinetek pontoons.



SAGUENAY BREAKWATER

Quebec, Canada

FACTS

Capacity of the marina: Deal with daily tides of up to 6.9m [23 feet] and withstand waves up to 2.3m [7.5 feet] high.

Products: Breakwater Pontoons

Customer: City of Saguenay

Delivered by: Marinetek North America with Marinetek Adriatic

Specialities: All-new 6300BRKH-series

Year of completion: 2018



Saguenay Cruise Port approached Marinetek North America requesting for a floating breakwater system that could remain in the water during the harsh conditions of icy winters and offer protection from aggressive waves and huge tides during the summer operating season.

Marinetek welcomed the challenge and concluded an extensive R&D project including tank tests conducted by VTT Technical Research Centre in Finland. New KH-series Breakwater Pontoons are professionally designed by experienced engineers to give the best attenuation performance in their category and offer extreme strength and long maintenance-free service life. The 86-ton units are industry giants, measuring 6m [19.6 feet] wide x 20m [65.6 feet] long x 2.4m [7.8 feet] high.

Top of the range 6300BRKH-series units with 2 x 116 ton flexible connection capacity were manufactured in Marinetek's factory in Croatia, shipped to Saguenay and installed by Marinetek North America.



6m wide pontoons provide cruise ship passengers safe access to their shuttle vessels.



6300BRKH-series units weight 86 tons apiece with 2 x 116 ton flexible connection capacity.

ÇEŞME MARINA

Çeşme, Turkey

FACTS

Capacity of the marina: 400 berths for 8-60 m yachts

Products: Heavy Duty Pontoons

Customer: IC Holding/Camper & Nicholson's Marinas

Delivered by: Marinetek DAS, Turkey

Specialities: Rolec power pedestals, Chain mooring

Year of completion: 2010





This award winning luxury marina has been carefully designed to sensitively integrate into an historic maritime city. It features 400 berths for yachts up to 60 m in length.

Located on unspoilt coastline at the western end of the Izmir Peninsula, Cesme Marina offers luxurious facilities for vessels of all sizes including superyachts. It is ideally positioned for cruising the Aegean and Mediterranean or just for short trips to nearby Greek islands. Marinetek provided 177 m of 4300HD pontoons and 100 m of 3300HD pontoons for the project, and also supplied and installed a Rolec equipment package of Seawave pedestals, Berthmaster computer management system and pump-out units. Cesme also benefits from a full service boatyard with an 80 ton boat lift and hard standing for up to 100 yachts.

The marina is operated by UK-based Camper & Nicholson's Marinas to international standard and has won many accolades. For example, in 2014 it was awarded the prestigious PIANC Jack Nichol Marina Excellence Design Award (MEDA). It has been praised for being sensitively integrated into an historic maritime city and offers superior shoreside amenities, such as restaurants, bars and boutiques, spa, swimming pool and fitness centre.

MID-HARBOUR SMALL BOATS MARINA

Gibraltar

FACTS

Capacity of the marina: 700 berths

Products: All-Concrete Pontoons, Mooring Fingers with WPC decking, Concrete Fingers

Customer: Government of Gibraltar

Delivered by: Marinetek Finland

Specialities: Titanium Hybrid Seaflex mooring system, Rolec power pedestals

Year of completion: 2015





Marinetek supplied and installed a total of 140 large size pontoon units and 350 mooring fingers among other equipment.

The huge project to build a 700-berth marina in Gibraltar was completed to a very tight timeframe and in just one single phase. The 700-berth facility for local boats up to 10m in length is complemented by a fixed breakwater, which acts as both a public promenade and mooring pier for superyachts and passenger vessels.

The project had high demands for the long life time and low life-cycle costs. Thus Marinetek's AllConcrete pontoons were therefore chosen as they require minimum annual maintenance and have a 50 year design life. For the same reason long-life Titanium Hybrid Seaflex was chosen as the mooring system. The pontoons are equipped with Marinetek's new FN8000 and FN600K fingers with WPC-decking and F6000C Concrete Fingers along with Rolec's smart card electricity and water services. The marina lighting system is powered by solar panels to make it as environmentally friendly as possible. The marina has also been designed to give disabled boaters good access to boats. To meet the deadline, five different production lines in three countries were used for the project, a process known as the 'One Marinetek' strategy.



ACI SLANO MARINA

Slano, Croatia

FACTS

Capacity of the marina: 190 berths, for yachts up to 24 m

Products: Breakwaters, All Concrete Pontoons

Customer: Adriatic Croatia International Club (ACI)

Delivered by: Marinetek Adriatic

Year of completion: 2016



In keeping with the high standard of fit-out throughout Slano Marina, Marinetek pontoons are generous in width and feature high quality hardwood decking.

Veliko Barbieri Slano Marina, named for one of the founders of Adriatic Croatia International Club (ACI), is the 22nd marina in the ACI chain and the first new marina to be built in 18 years. Designed to exceptionally high standards it is one of several marinas Marinetek has built or extensively refurbished for ACI during a long standing working relationship. Located on a scenic part of the Adriatic coast just 37 km from Dubrovnik and 49 km from Cilipi Airport, Slano is a favoured tourist destination nestled in a 2 km bay with sheltered swimming and sailing waters.

Marinetek created a marina system for 200 vessels up to 20 m in length with some flexibility for larger visiting vessels. Two 120 m long x 3 m wide pontoons dominate the centre of the basin, protected by a breakwater to the north and another to the west. A 100 m long x 4.3 m wide walkway was also installed at the shoreline. In addition to offering sheltered quality pontoon mooring, the marina has a pool, pub, restaurant, berth holder sanitary facilities and ample car parking.

PORT HERCULES

La Condamine, Monaco

FACTS

Capacity of the marina: 700 berths for yachts up to 130 m

Products: Super Yacht Pontoons

Customer: Ports de Monaco

Delivered by: Marinetek Finland with Marinetek Adriatic

Specialities: 120 m Super Yacht Pontoon, used for the Monaco yacht Show, has exclusive LunaComp decking

Year of completion: In stages 2011–2018



Port Hercules is one of the most famous yachting destinations in the world and a symbol of glamour welcoming luxurious yachts and associated jet-set lifestyle. It is situated right in front of the Monaco Grand Prix race track and the Lord Foster designed Yacht Club de Monaco. Since 2010 Marinetek has worked closely with Ports de

Monaco to improve facilities for the very largest yachts. Marinetek Super Yacht Pontoons provide the stability, high freeboard and exceptional capacity for utilities required by demanding yachts. After the latest phase in 2018 Marinetek has delivered to Monaco over 300 m of pontoons in four locations.

PHUKET YACHT HAVEN

Phuket, Thailand

FACTS

Capacity of the marina extension: 800 m alongside berths for yachts up to 100 m

Products: Super Yacht Pontoons

Customer: Phuket Yacht Haven

Delivered by: Marinetek SEA, Singapore

Specialities: Titanium Hybrid Seaflex mooring, JLD Marine Anchors, central cable channels

Year of completion: 2015



Located on the northeast coast of the island of Phuket, Phuket Yacht Haven Marina welcomes boats of all sizes but is widely regarded as a first port of choice for superyachts. With the benefits of deep water access and close proximity to the airport, it has become the largest and busiest marina in the region. Marinetek was contracted to help meet demand by installing a dedicated superyacht pier. This provides

the first 100 m superyacht berths in the region and represented a landmark introductory reference for Marinetek in South East Asia. Vessels berth on each side of the 260 m long Super Yacht Pontoon and at three further 48 m long Super Yacht Fingers. All pontoon elements were manufactured in Johor, Malaysia, and transported 600 nm to Phuket by ocean-going barge.

WEST HARBOR BREAKWATER

San Francisco, USA

FACTS

Capacity: Can withstand mooring forces of 20 ton and above

Products: 110 ton pontoon sections with semi-flexible rubber connections

Customer: City of San Francisco

Delivered by: Marinetek NA, USA

Year of completion: 2013



The floating breakwater installed for the City of San Francisco's West Harbor Marina was a record breaker for Marinetek that played its part when the City hosted the 2013 America's Cup. It is the heaviest built to date by Marinetek and withstands the forces of sustained winds of 44 m/s with a period of four seconds. The pontoons were cast in Antioch,

California by Marinetek's Mobile Production Team and were towed to the site and anchored in place using galvanised steel chains secured to submerged steel piles. West Harbor Marina was a pivotal site for the America's Cup and the marina provided an ideal viewing point for spectators.

VOLVO OCEAN RACE MARINA

Abu Dhabi, United Arab Emirates

FACTS

Capacity: 10 Volvo Open 70s racing yachts and six smaller 6 m long support boats

Products: Super Yacht Pontoon and Fingers

Customer: Abu Dhabi Tourism Authority (ADTA)

Delivered by: Marinetek MEA with Marinetek Force 10, UAE

Specialities: 18 m gangways and a removable handrail dividing barrier, Seaflex mooring

Year of completion: 2011



The Volvo Ocean Race Marina was initiated by the Abu Dhabi Tourism Authority as the first Arab destination to host the awe-inspiring Volvo Ocean Race fleet. The marina accommodates Volvo Open 70 racing yachts and smaller race support boats and was

delivered ahead of schedule. The main walkway is 5 m wide and the length of pontoon is 100 m. All pontoons were manufactured in the Emirates. The marina is at the heart of a fan-friendly destination village that boasts a vibrant entertainment programme.

MARINA MANGALIA

Mangalia, Romania

FACTS

Capacity of the marina: 160 berths.

Products: Heavy Duty Pontoons, Mooring Fingers, Super Yacht Fingers.

Customer: Mangalia Municipality.

Delivered by: Marinetek Finland.

Year of completion: 2007.



Situated on the border of Romania and Bulgaria, the port city of Mangalia is a popular Black Sea spa resort that enjoys hot summers and some of the warmest winters in Romania. The Mangalia Marina project, undertaken by Romania-based Marinetek BSM, was designed to give the city the most modern marina on the Black Sea coast and was funded in part by EU grants as part of a wider reaching regional

infrastructure improvement plan. The marina has added a new dimension to the city and attracts an increasing level of visitors. It is an ideal starting point for coastal sailing to Bulgaria and the Danube Delta. Together with Varna Marina in Bulgaria, Marina Mangalia hosts the BMW Black Sea International Regatta.

SUNE CARLSSON BÅTVARV

Saltsjöbaden, Sweden

FACTS

Capacity of the marina: 130 berths

Products: Heavy Duty Pontoons, Breakwaters, Mooring Fingers

Customer: Sune Carlsson Båtvärv

Delivered by: Marinetek Sweden

Year of completion: 2011



Sune Carlsson Shipyard & Marina is a preparation and maintenance centre for a wide variety of leisure boats and the home base for many luxury yachts. It is also a regatta centre and actively supports sailing activities in Sweden and beyond. A broad range of boat repairs and maintenance services is available and top class service is offered to

very demanding customers. Located a stone's throw from Stockholm's beautiful and historic city centre, the marina has been designed and built to be one of the most advanced in Scandinavia. It was completely rebuilt in 2011 by Marinetek Sweden.

SVANEMØLLE HAVNEN

Copenhagen, Denmark

FACTS

Capacity of the marina: 1 200 berths

Products: Heavy Duty and System Pontoons, Mooring Booms and Fingers

Customer: Copenhagen Harbour

Delivered by: Marinetek Finland with CC-Design, Denmark

Year of completion: In stages 2008-2010



Redeveloping Svanemøllehavnen in the heart of the city of Copenhagen has been one of the biggest marina projects in Denmark to date. Marinetek worked with Danish partner CC-Design to deliver three phases of replacement infrastructure that constituted a total rebuild of the 1 200-berth facility. Pontoons were manufactured in Finland

and Fingers built in Latvia by Marinetek Latvia. Svanemøllehavnen is Denmark's largest marina and prides itself on welcoming visitors. Around 3 000 visiting boats moor up each year. The marina has three on-site yacht clubs and access to many harbour restaurants. It is famed for its permanent display of wooden boats.

PORTO CARRAS MARINA

Halkidiki, Greece

FACTS

Capacity of the marina: 315 berths

Products: Super Yacht and Heavy Duty Pontoons, Steel Pontoons, Mooring Fingers

Customer: Technical Olympic

Delivered by: Marinetek Finland

Specialities: Production in Finland, England and Portugal, Rolec power pedestals

Year of completion: 2003



The Porto Carras Grand Resort Marina is the largest private marina in northern Greece and is well known as an entertainment, tourist and watersports venue. Situated on the western coast of Sithonia, Halkidiki's central peninsula, the marina is surrounded by the rising slopes of Mt. Meliton and the blue waters of the Toroneos Gulf and has access to a wonderful mix of sandy beaches surrounded by

verdant landscape. Renovations in 2003 enhanced and improved the services and facilities offered and a 24-hour Port Captain Service was introduced. The marina is open year round for vessels up to 55 m in length, has Blue Flag environmental certification and has been at full occupancy since it was first built.

SOCHI GRAND MARINA

Sochi, Russia

FACTS

Capacity of the marina: 210 berths for yachts up to 50 m

Products: Heavy Duty and All-Concrete Pontoons

Customer: Commercial Seaport of Sochi

Delivered by: Marinetek SPB, Russia

Year of completion: 2013



The development of Sochi Grand Marina was an integral part of the City's preparation programme for the 2014 Winter Olympic Games and was designed most particularly for superyacht moorings. The marina was built in a disused cargo and passenger port that has also been regenerated to include a cruise ship terminal. Planning and strict timetabling was essential in order to meet the deadline of the Games.

All Marinetek pontoon elements were manufactured in St Petersburg and delivered via cargo ship by means of a 7 000 km journey through Russian inland waterways. Installation took two and a half months but was completed one month ahead of schedule. The marina is a bonus to the city and now in use year-round due to the temperate Black Sea climate.

SOPOT MARINA

Sopot, Poland

FACTS

Capacity of the marina: 103 berths

Products: Heavy Duty Pontoons, Mooring Fingers

Customer: City of Sopot

Delivered by: Marinetek Finland with Karos, Poland

Specialities: Seaflex mooring

Year of completion: 2011



Marina Sopot is located on the end of the pier in the small scenic seaside town of Sopot, a renowned spa resort in eastern Pomerania. The pier is a major attraction as it is the longest wooden pedestrian pier on the Baltic coast, measuring 511,5 m in length and stretching out 458 m into the Gulf of Gdansk. The marina was officially established

in 2005 but construction did not begin until 2010. A seasonal facility, operating from 1 April to 31 October, Marina Sopot is a city showcase. It is divided into three basins and offers 63 berths for boats up to 10 m and 40 berths for vessels up to 24 m. Due to its location and facilities, however, it enjoys high tourist traffic all year round.

ITÄMEREN PORTTI MARINA

Hanko, Finland

FACTS

Capacity of the marina: 320 berths

Products: Heavy Duty Pontoons, Super Yacht Fingers, Mooring Fingers

Customer: Itämeren Portti

Delivered by: Marinetek Finland

Specialities: Rolec power pedestals

Year of completion: In stages 2013-2016 (extension)



The best known marina in Finland, Itämeren Portti [‘Gate to the Baltic’] is being completely rebuilt in three phases in order to boost berth numbers and cater for vessels up to 25 m in length. The result will help reduce a waiting list for a marina that is truly blessed with the best of locations. Hanko is a small jet-set town on the southernmost tip of Finland 130 km west of Helsinki. It is a boater’s paradise and

the favoured summer vacation spot for the rich and famous who are attracted to its breath taking views, long sandy beaches, restaurants, golf course and all the delights of island-studded open water. Construction work for the project involved removing a small island and installing a fixed breakwater.

NEW PORT KEILALAHTI

Espoo, Finland

FACTS

Capacity of the marina: 260 berths

Products: Breakwaters, Premier and Heavy Duty Pontoons, Mooring Fingers, Super Yacht Fingers

Customer: Marinetek Marinas

Delivered by: Marinetek Finland

Specialities: 3 floating buildings, Seaflex mooring, Rolec power pedestals

Year of completion: In stages 2002-2010



Perfectly located in Keilalahti Bay, this luxurious marina is in the midst of Finland's 'Silicon Valley' and only 10 minutes from the capital city of Helsinki. This is an area of considerable wealth, the heartland of technological developments and the office site for international companies like Microsoft, Kone and Fortum.

The marina is administered by New Port Keilalahti Oy, whose shareholders have established the New Port Yacht Club which offers an education and leisure programme. Keilalahti is the flagship marina in the New Port marina chain being completed by Marinetek Finland in Finland.

MARINA KAMIEN POMORSKI

Kamien Pomorski, Poland

FACTS

Capacity of the marina: 240 berths

Products: Heavy Duty Pontoons, Breakwaters, Mooring Fingers

Customer: City of Kamien Pomorski

Delivered by: Marinetek Finland with Karos, Poland

Year of completion: 2011



Marina Kamien Pomorski is a marina within the West Pomeranian Sailing Route project. This includes the construction of a necklace of port and marina infrastructure surrounded by the Szczecin Lagoon, the Szczecin and the Baltic Sea. The route connects Berlin in Germany via the Baltic to Scandinavia and benefits from extremely good road

access. The marina is positioned within the old city of Kamien Pomorski and is the biggest marina on the west coast of the Baltic. It enjoys ideal wind conditions for sailing and has thus been constantly expanded. In addition to offering berths for recreational craft, the marina rents out sailboats, pedal boats and kayaks.

BÖBS-WERFT MARINA

Travemünde, Germany

FACTS

Capacity of the marina: 100 berths

Products: All Concrete Pontoons

Customer: Böbs Werft Travemünde

Delivered by: Ostseedienst, Marinetek Latvia [supplier]

Year of completion: 2016



Böbs-Werft Marina and its associated shipyard is a landmark marine facility in the seaside resort of Travemünde near Lübeck. It was completely refurbished in just three months. Working with construction company Ostseedienst and civil engineer Thees Thiel of ITT Port Consult GmbH, Marinetek delivered 380 m of pontoons and 30 steel piles – each measuring 16.5 m in length. Prior to installing the new floating

system, the entire 120-berth marina, which comprised nearly 400 m [620 m²] of fixed timber pontoons and 182 piles, was demolished and removed from the site. The marina is located in a sheltered spot on the north bank of the Trave estuary, just 1.5 nm from the open reaches of the Baltic Sea. It accommodates boats up to 25 m and offers visitors a very friendly welcome.

LONGKOU MARINA

Shandong, China

FACTS

Capacity of the marina: 47 berths for yachts up to 30 m

Products: All-Concrete Pontoons, Super Yacht and Concrete Fingers

Customer: Nanshan Group

Delivered by: Marinetek Finland

Specialities: Rolec power pedestals

Year of completion: 2011



In a feat of carefully controlled logistics, Marinetek Group transported an entire purpose-built marina system from Finland to China in order to complete the first phase of Longkou Marina in the province of Shandong. The project was finished in a record time of less than six months, with installation undertaken by a local Chinese workforce under Marinetek supervision. The

marina can berth vessels up to 30 m in length and is anchored by strong steel piles. High winds and variable water levels were taken into account for the design. The customer, Nanshan Group, is one of the 500 biggest companies in China and selected a completely bespoke marina. The project was the first to be completed by Marinetek in China.

ROYAL HONG KONG YACHT CLUB

Hong Kong

FACTS

Capacity of the marina: Special regatta, service and moorings pontoons with 150m alongside berths

Products: All-Concrete Pontoons

Customer: RHKYC / China State Construction Engineering (HK) Ltd.

Delivered by: Marinetek Hong Kong

Specialities: Fully custom made pontoons and haul-out space

Year of completion: 2015



The prestigious Royal Hong Kong Yacht Club (RHKYC) enhanced its Kellett Island facility with a number of new Marinetek pontoons. The moorings are used for members' boats and help support the club's active racing programme in Hong Kong Harbour. All-concrete pontoons were supplied as part of a re-provisioning agreement relating to a major civil works project affecting the Causeway Bay

Typhoon Shelter. The pontoons had to fulfil a complex specification and meet tight documentation requirements set by the Hong Kong authorities. The contract also called for relocation of some older pontoons to improve fairway alignment. RHKYC is one of the oldest sports clubs in Hong Kong. Kellett Island is home to the RHKYC headquarters and it enjoys unrivalled access to the harbour.

TAQAH FISHING MARINA

Taqah, Oman

FACTS

Capacity of the marina: 2 fish-landing pontoons and a 16 berth marina

Products: Super Yacht Pontoons with wood composite decking, Super Yacht Fingers

Customer: STFA contractors on behalf of the Ministry of Fisheries & Wealth, Oman

Delivered by: Marinetek MEA, UAE

Year of completion: 2015



Taqah is a coastal town in southwestern Oman that enjoys a busy fishing industry reliant on small boats powered by outboard engines. Marina pontoons were the ideal solution for convenient and safe berthing, and Marinetek worked with Turkish contracting group STFA to build a new harbour that would be a big asset to the local community.

Concrete pontoons were the most appropriate product for the project due to their low maintenance requirements and resistance to high summer temperatures and humidity [up to 50 °C and 90 %]. The 20 m x 6 m, 80-ton float units were transported 1 600 km by road.

ROYAL YACHTS

Muscat, Sultanate of Oman

FACTS

Capacity of the marina: One pontoon of 80m length and one of 40m length

Products: 5m wide Superyacht pontoons

Customer: Royal Court Affairs, Sultanate of Oman

Delivered by: Marinetek Middle East & Asia FZCO

Specialities: Seaflex moorings, wood-composite decking

Year of completion: 2015



Marinetek was contracted by the Royal Court Affairs to install two private marina pontoons for use by the Royal Yachts. The first pontoon of 80m x 5m, moored by Seaflex, and fitted with a wood composite decking and 10t capacity superyacht mooring bollards was installed in Port Sultan Qaboos, directly opposite the historic corniche and its famous souk. The second pontoon of 40m x 5m was moored in Marsa

Al Makallah, in front of the Sultan's Palace and beneath the protecting gun battery. This bay is a traditional anchorage and evidence of this can be seen on the surrounding rock faces which are covered by ships' names, some of which were painted two centuries ago. Marsa Al Makallah is subject to a heavy swell during some weather conditions, and so the gangway is designed to be hoisted clear of the pontoon.

ÖRÖ FORTRESS ISLAND

Kemiönsaari, Finland

FACTS

Capacity of the marina: 70 berths

Products: All-Concrete Pontoons, Mooring Fingers, Boat Booms

Customer: Metsähallitus, Nature services of Northern Finland

Delivered by: Marinetek Finland

Specialities: Rolec Power Pedestals

Year of completion: 2015-2016



The Örö fortress island has been a closed military area for a hundred years. It showcases the history of Finland's coastal defence, from the days of Tsarist Russia until the present day. In 2015 Marinetek was commissioned to build a guest marina with 70 berths. In addition to the marina the island has a restaurant, small houses for rent and a dock for

canoeist. The Archipelago of Turku is a paradise for boaters, but there is a clear lack of sheltered harbors in the outskirts of the archipelago. The full service harbor built by Marinetek fills this gap for Finnish boaters. In the spring of 2016 the Örö Fortress Island guest marina was expanded with a third Marinetek pontoon.

KIVENLAHTI BOAT CLUB MARINA

Espoo, Finland

FACTS

Capacity of the marina: 558 berths

Products: Heavy Duty, All-Concrete Pontoons

Customer: City of Espoo & Kivenlahden venekerho, KLV Oy

Delivered by: Marinetek Finland

Specialities: Marinetek Mooring System

Year of completion: In stages 2010–2018



Over the recent years, Marinetek's Finnish subsidiary has worked on a variety of modernisation projects including Kivenlahti Boat Club in Espoo. The result is a transformation of tired and ageing floating systems into safe and modern boating hubs.

Marinetek redesigned and rebuilt Kivenlahti in stages that caused minimal disturbance to berth holders and eased the financing of the contract. A total of 1360m of All-Concrete type pontoons with widths of either 2.6 or 3.0m were installed, along with access bridges, safety equipment, power lines and mooring fingers.

MARINA AGANA

Croatia

FACTS

Capacity of the marina: 134 berths

Products: Heady Duty Pontoons

Customer: Yachting Sport Agana

Delivered by: Marinetek Adriatic

Specialities: Galvanized steel arm anchoring

Year of completion: 2018



Situated halfway between Split and Sibenik in a sheltered bay in the picturesque village of Marina, Marina Agana offers boaters a safe and peaceful base from which to explore the island-studded Dalmatian Coast. Quality is important to the marina operator, and the marina infrastructure was in need of an upgrade. Marinetek replaced all existing pontoons, cleats, fenders and access bridges. Standard concrete anchor blocks were used in deep water and geotechnical anchors installed in the shallows. The anchoring system was positioned in

parallel with the fixed breakwater and secured by a series of galvanised steel supports with diagonal Inox cables that absorb longitudinal forces. The completed marina has six piers totaling 470 m in length to give 134 berths for vessels up to 25 m. Marinetek also installed completely new infrastructure for shoreside and pontoon power and water and all berths have new service pedestals. Agana Marina was the 100th project delivery for Marinetek Adriatic.

LUČICA BATALA

Croatia

FACTS

Capacity of the marina: 600 berths

Products: Breakwaters and Heavy Duty Pontoons

Customer: County Port Authority of Dubrovnik

Delivered by: Marinetek Adriatic

Specialities: Municipal port with large number of berths

Year of completion: 2017



Boaters living in and around Croatia's famous city of Dubrovnik can now moor their vessels in a new public boat harbour. Batala Marina project embodies the County Port Authority's vision for meeting the berthing demands of local boat owners, many of whom have tied up at swing moorings for years. The new marina, with stable and maintenance-free Marinetek floating Heavy Duty concrete pontoons, converted 150 swing moorings into around 600 secure berths giving the City not only one of the most modern marinas in Croatia but a

true community boating hub. As main contractor, Marinetek built and supplied six piers with a total length of 600m. For the first phase, the company focused on a 100m long pier designed for the first 60 boats, and in phase two delivered and installed four further piers and a breakwater pontoon with inner berths. All pontoons are securely and safely anchored using the Seaflex elastic mooring system with reinforced concrete anchor blocks.

SCT - MARINA TROGIR

Croatia

FACTS

Capacity of the marina: 180 berths

Products: Breakwaters and Heavy Duty Pontoons

Customer: Service Center Trogir

Delivered by: Marinetek Adriatic

Specialities: Anchor system to cope with the strong current in the channel

Year of completion: 2014 and 2015



Service Center Trogir aims to position itself in the highest category among the regional providers of premium nautical services. After completion of the latest construction phase, Marina Trogir has a total of 256 berths for vessels from 12 m to 25 m in length and 30 berths

for larger yachts up to 120 m. Marinetek Adriatic has been closely involved in the development of the nautical center and provided turn-key deliveries for all stages.

CAROLINE BAY MARINA

Bermuda

FACTS

Capacity of the marina: Slips and med-mooring for 21 megayachts

Products: Breakwaters, Aluminium walkways on concrete floats

Customer: Morgan's Point Ltd

Delivered by: Marinetek NA, USA

Specialities: Keeled floating breakwaters, aluminium docks on hi-stability concrete floats, designed for hurricanes

Year of completion: 2017



Timed to open when the 35th America's Cup fleet arrives in Bermuda, Caroline Bay Marina is part of the new Caroline Bay luxury residential community and destination resort. The Marinetek marina system includes berths for 23 visiting megayachts. Working under a turnkey contract, Marinetek will supply breakwater pontoons with side keels to maximise wave attenuation and offer

630.5 m of outer pontoon space for yachts up to 76 m in a mix of alongside and stern-to positions. The breakwaters also provide interior mooring for smaller vessels and safeguard a further berth arrangement for vessels of 12-24 m built using a Marinetek aluminium pontoon system. This is anchored by steel pipe piles and features concrete floats and hardwood decking.

PORT TAKOLA MARINA & YARD

Krabi, Thailand

FACTS

Capacity of the marina: 260 berths

Products: Heavy Duty and All-Concrete Pontoons

Customer: Gangadhara Company Ltd

Delivered by: Marinetek SEA, Singapore

Year of completion: 2016 phase I



Located within a private family-owned estate, Port Takola is being built in phases as the focal point of a low-density, low-rise resort with residences, hotel and nature trail. Over time, it will expand to offer 260 berths. For phase one, Marinetek supplied 225m of 4 m wide pontoons for alongside and stern-to mooring system for up to 50 vessels of 12 – 40m in length. Boaters have access to a café,

good sanitary facilities, fuel dock, a 12 m wide slipway with 38 tons hydraulic trailer boat lift and increasing number of yachting-related businesses. Krabi International Airport is nearby. Although close to the busy tourist attractions of Ao Nang and Phang Nga Bay, Port Takola is sheltered and green set within unspoilt landscape.

PORTONNOVI MARINA

Boka Bay, Montenegro

FACTS

Capacity of the marina: 220 berths for 8-80 m yachts

Products: Breakwaters, Super Yacht Pontoons, All Concrete Heavy Duty Pontoons

Customer: Azmont Investments

Delivered by: Marinetek Adriatic

Year of completion: 2017



A luxury 220-berth marina for yachts of 8-80 m in length, Portonovi Marina is part of the new luxury Portonovi Resort Village under development on the shores of Boka Bay. Working closely with UK design company Marina Projects, Marinetek has met a challenging brief to supply all floating elements for the project. This includes a 180 m long x 5 m wide wave attenuator, pontoons with fingers and

substantial superyacht berths. Portonovi covers an area in excess of 25 ha making it one of the biggest marina resort development sites in the Mediterranean. The village comprises a mix of 290 luxurious residential properties, the first One&Only resort hotel in Europe, an Espace Henri Chenot spa and an iconic yacht club building.

SHIPYARD MARINA

Hoboken, USA

FACTS

Capacity of the marina: 54 berths

Products: Heavy Duty Pontoons with aluminium finger piers

Customer: Hoboken Sailing Club

Delivered by: Marinetek North America

Specialities: Complete rebuild

Year of completion: 2017



Marinetek completed the rebuilding of the Shipyard Marina / Hoboken Sailing Club, located in Hoboken, NJ in 2017. The site is plagued with high exposure to wind generated waves and severe wakes from the relentless Ferries that traverse this area of the Hudson River on a daily basis. The old timber docks could not handle the rough environment and were constantly being damaged, repaired, and then damaged again.

Marinetek was selected to rebuild the marina due to its concrete dock system that is designed for the rough water. Hoboken Sailing Club chose to use Marinetek's big stable concrete main docks, which are effective wave attenuating docks, and beautiful aluminium finger piers with composite decking.

ACI ROVINJ MARINA

Croatia

FACTS

Capacity of the marina: 200 berths

Products: Heavy Duty Pontoons

Customer: Adriatic Croatia International Club (ACI)

Delivered by: Marinetek Adriatic

Specialities: Complete reconstruction of the old marina and construction of a new luxury marina

Year of completion: 2018



ACI Marina Rovinj is located on the western coast of the Istrian peninsula, in the heart of beautiful Istria, a perfect place to indulge in gourmet food and wine, ancient history and enjoy gorgeous pebble coves giving onto warm turquoise sea. Moreover, it is an ideal starting point to the 22 islets in the Rovinj archipelago.

Marina was built in 1984. Complete reconstruction of the sea and land part of the whole marina started in 2017. The new ACI marina Rovinj

will be a modern marina of superior design with the latest technological solutions and services, as well as the first ACI marina with the highest categorization – of five anchors.

With total of 200 moorings or berths for boats of average length of 18 meters, the new marina will bring together all the technical and support services and it will be the most modern nautical one stop shop destination. Opening of the marina is planned for spring 2019.

THAMESPORT MARINA

New London, USA

FACTS

Capacity of the marina: 167 berths

Products: Breakwater pontoons with aluminium finger piers

Customer: Thamesport Marina

Delivered by: Marinetek North America

Specialities: L-shaped breakwater with aluminium mooring fingers

Year of completion: 2018



Thamesport Marina located in New London, CT, completed the expansion of his Marina in the fall of 2017. The original Marina had 113 fixed timber docks. Their open exposure to Long Island Sound and vessel wakes made the slips uncomfortable due to constant wave action. The owner wanted to add an outer floating wave attenuator to help protect the marina from the waves and to provide additional transient dockage for larger vessels.

Marinetek designed and fabricated an L-shaped BRS-Series floating breakwater system with aluminium finger piers on the leeward side of the attenuating dock. This addition provided 54 additional slips to the marina. The marina is now well protected and largest yachts may moor along the outside of the dock, which was another desire for the marina.

ANA MARINA

Nha Trang, Vietnam

FACTS

Capacity of the marina: 220 berths up to 70

Products: Super Yacht and Heavy Duty Pontoons

Customer: Ana Marina Nha Trang Co., Ltd.

Delivered by: Marinetek SEA, Singapore

Specialities: First marina in Vietnam

Year of completion: 2018 phase 1



Ana Marina in Nha Trang on the south east coast of Vietnam will be the country's first world class marina, initially offering 100 berths for vessels up to 70m and extra wide berths for catamarans. Nha Trang is the most vibrant resort town in Vietnam with an outstandingly beautiful bay and a wide variety of beaches and islands. The town has an international airport, good road and rail connections and welcomes up to 4 million tourists per annum; around 50% of the national annual

total. With a short rainy season and low typhoon risk, Nha Trang is enjoying rapid development and is further building on its position as a tourist destination of choice. Marinetek has provided a range of berthing options for the first phase with 4m wide Heavy Duty pontoons equipped with open top cable channels and super yacht bollards. A custom-designed fuel dock pontoon will be able to serve even the largest yachts.

MORE THAN 2 000 MARINAS AND 50 COUNTRIES

We believe our work speaks for itself. Our international track record is down to unique expertise, decades of experience and a thorough understanding of our customer base. Whatever our customers need, we deliver – with tailor made solutions and uncompromised quality that is known around the world.





9.



10.



11.



12.



13.



14.



15.



16.



17.



18.



19.



20.

1. Varna Marina, Varna, Bulgaria
2. ECC Marina, Xunliao, China
3. Noblessner Marina, Tallinn, Estonia
4. Rosendal Marina, Rosendal, Norway
5. Marina Rünthe, Bergkamen, Germany
6. Sundsvall City Marina, Sweden
7. Al Bandar, United Arab Emirates

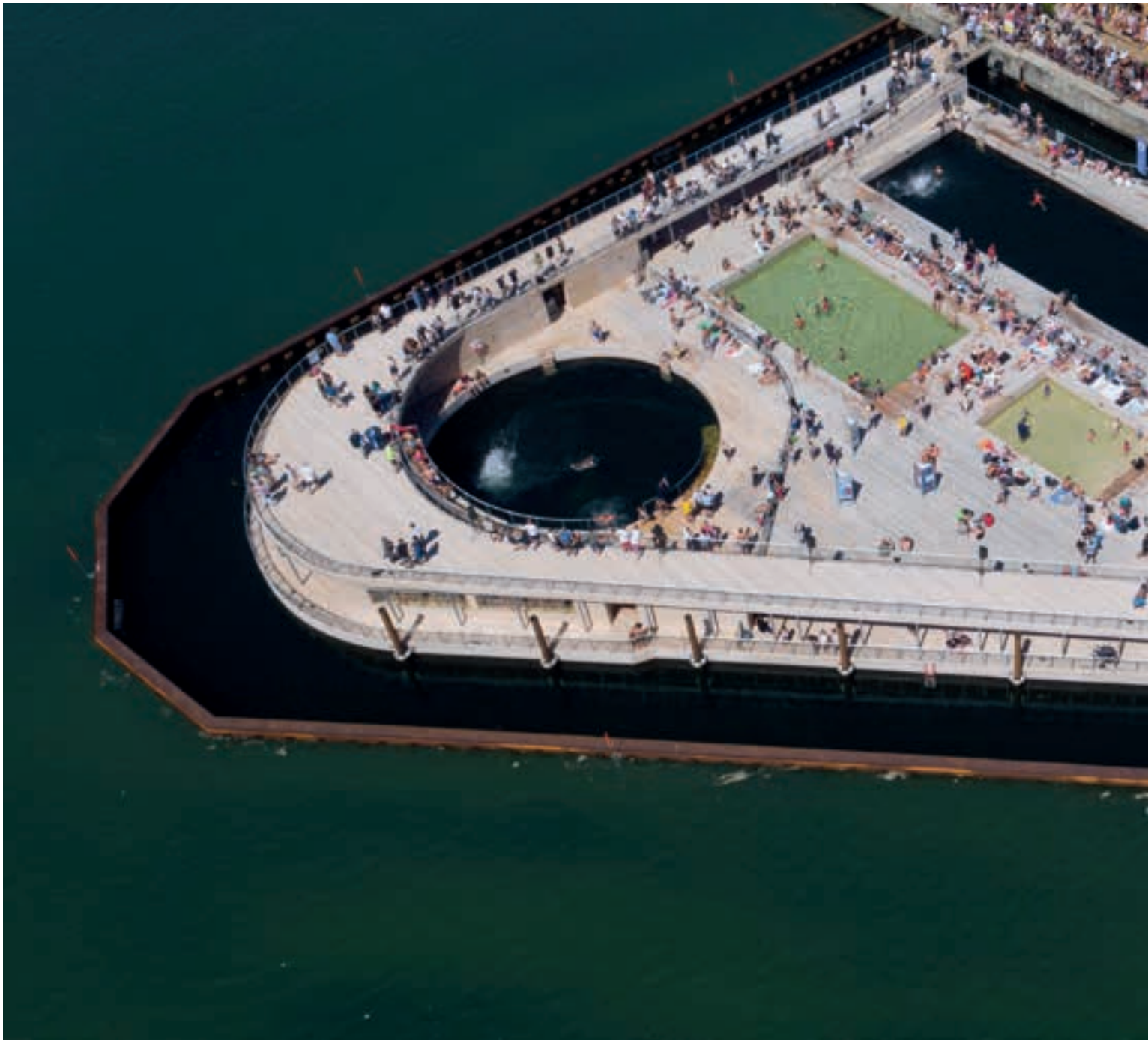
8. Varadero Marina, Alicante, Spain
9. Riviera Beach, Florida, USA
10. Riga Marina, Riga, Latvia
11. Uostadvaris Marina, Lithuania
12. Port of Kotor, Kotor, Montenegro
13. Vila Franca Xira, Portugal
14. Terijoki Yacht Club, Russia

15. Vejle Lystbådehavn, Vejle, Denmark
16. Cala dei Sardi, Sardinia, Italy
17. ACI Marina Pula, Pula, Croatia
18. Carrickfergus Marina, Belfast, UK
19. Testal Commercial Marina, Spain
20. Musso Marina, Lake Como, Italy

FLOATING SOLUTIONS

Floating Solutions are an essential element when planning modern and profitable waterfront developments. Marinetek's portfolio includes swimming arenas, rowing and sport stadiums, water plane stations, activity platforms, terraces and Intelligent Floating Platform for floating club houses, service buildings and for all kinds of buildings and many other structures that can be built to float.

Building on water is an environmentally friendly and sustainable way to meet increasing demands for varied amenities. Marinetek's partner in floating concepts is Bluet Oy.



SWIMMING ARENAS

Swimming Arenas and Activity Platforms are becoming more and more popular in modern city planning schemes and can offer unique year-round urban activity centres right in the heart of the city. Playgrounds, exercise areas, different sized pools and sun bathing areas create additional value for the waterfront. Marinetek offers a custom made floating platform that includes service buildings, open or closed pools with fresh water treatment and heating systems, and all necessary associated equipment. Heated

pools with adjacent service buildings, like saunas, can be used even in the cold winter months. Swimming Arenas and Floating Platforms are environmentally friendly and cost-effective solutions and offer a great opportunity to extend the limited space available at the waterfront. They are easy to modify for different uses, and are thus of great appeal to any investor seeking multiple revenues year around.



CONTACT

Bluet Oy Ltd
+358 9 8560 6855
info@bluet.fi



Harbour Baths, Aarhus, Denmark



Oslo, Norway



Koralbadet, Copenhagen, Denmark



Gasa Bathing Pavilion, Gibraltar



ALLAS SEA POOL

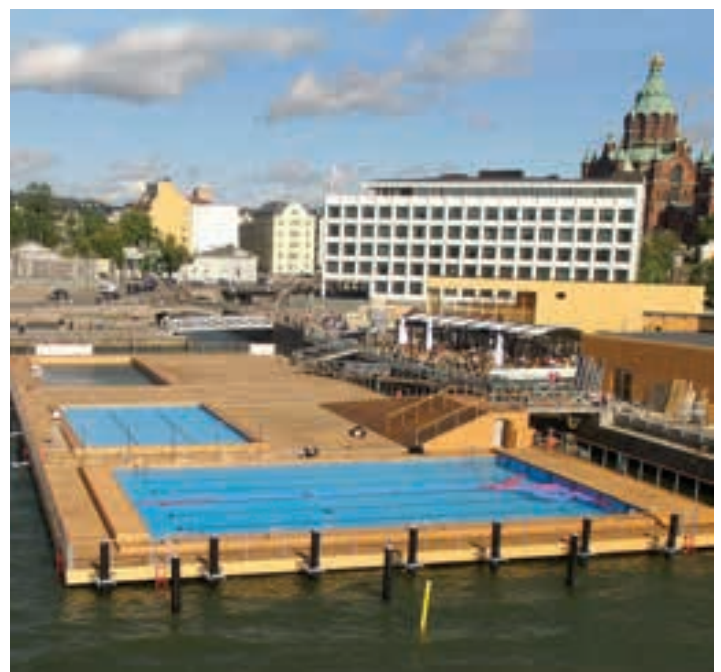
Enjoying a central seafront location in the heart of Helsinki, the Allas Sea Pool has transformed an under-used site into a recreational oasis. Marinetek used the experience it gained in building urban swimming arenas in Gibraltar, Norway and Denmark to develop the Allas concept but broadened the scope yet further. Now fully operational, the facility offers a year-round spa, pools and saunas, as well as a floating deck with a separate lounge and sports areas. The pools are filled with either heated fresh water or filtered seawater.

Covering a total area of 2,700m², the centre has been partly built using modules. This proven formula enables Marinetek to rearrange or dismantle the pontoons to change the shape. Three swimming pools are included in the scheme and all are embedded in a single floating platform fully decked with Finnish spruce. The project is a perfect expression of Marinetek's philosophy that modern waterfronts require diverse structures that serve many purposes.



CONTACT

Bluet Oy Ltd
+358 9 8560 6855
info@bluet.fi



The pools at Allas Sea Pool provide something for all ages and tastes, utilising both seawater and freshwater. The generous deck area, ideal for sunbathing and socialising, transforms the centre into a true community space.



SERVICE BUILDINGS

Floating Service Buildings are economical to purchase, do not use up valuable land and have low life cycle costs. Marinetek's Intelligent Floating Platform is maintenance-free, does not harm the seabed or marine life and lasts for at least 50 years. A modern marina must offer more than just berths and Marinetek's variety of Floating Solutions and other essential structures – such as utility and service buildings – can be used to add valuable amenities.

Floating club houses, cafés and office buildings are popular choices for marina operators and other on-site providers, such as customs and coastguard. It is universally accepted that centralising revenue-creating operations has a positive impact on marina revenues and Marinetek's Marina Service Buildings are examples of the turnkey solutions offered in the 'all-inclusive integrated marina'.



Service buildings, Palm Jumeirah Marinas, Dubai, UAE



Boat House, Slatina City, Romania



Floating Restaurant, Stockholm, Sweden



Club House, Copenhagen, Denmark



SEAPLANE STATIONS

Seaplanes are an excellent way of transporting people and goods between large cities, along coastal routes and to and from remote islands or inland lakes. Landing stages for seaplanes are designed to be easily adjusted for each particular location and to meet the needs of the operator company. Apart from the floating pontoon itself, which is always assembled from standard Marinetek pontoons, all related equipment is specially designed for seaplanes

and their users. All safety equipment, soft fenders, 'in deck' service utilities, lighting, bridges and mooring systems are fully customised in order to meet the very strict regulations required both by Civil Aviation Agency and local Port Authorities. Seaplane stations are very good examples of Marinetek's flexibility in developing truly tailor made products.



Hydroplane Port Rab, Croatia



Porto Carras, Greece



Hydroplane Port Pula, Croatia



Hydroplane Port Resnik, Croatia



FLOATING HOUSES

A Floating House is a unique solution for a restaurant, a club house, year-round living, as a workplace or for a second home. Living or working in a floating house is a stylish life choice and if you love the sea, you will love the floating house. Marinetek offers an Intelligent Floating Platform for all kind of floating structure. It is very strong, stable, designed to meet local requirements, lasts for more than 50 years and is maintenance-free. The house modules are shipped to the site, lifted onto the pontoon platform, towed to final position, moored and connected to the municipal water, electricity

and sewage network. Floating houses can benefit from solar, wind and heat pump technology. Construction is environmentally bullet proof, with no negative impact on the seabed or marine life. Marinetek's local partner, Bluet Oy, offers houses featuring different architecture, from traditional Scandinavian styles to modern urban looks. Houses are always customised and are manufactured as prefabricated modules under controlled factory conditions.



CONTACT

Bluet Oy Ltd
+358 9 8560 6855
info@bluet.fi



Villa Helmi, Espoo, Finland



Joutsenon Helmi, Lappeenranta, Finland



Villa Helmi - Interior



Reposaari Village, Pori, Finland

SPORT CENTRES

Marinetek's multi-functional floating solutions are excellent for sports facilities such as the recently completed Nathan Benderson Park Rowing & Aquatic sports centre in Sarasota, Florida. Designed and built by Marinetek North America, the mile-long floating wave attenuating structure protects the race course from wave action and also serves as a floating bridge for pedestrians and vehicles. Three hinged sections allow boat traffic to pass through and wider

docks are included for vehicle parking and turn-around. The pontoon is also outfitted with wave absorption panels, specially designed by Marinetek, which act as an artificial beach for the reduction of reflected wave energy. The panels effectively dissipate and eliminate waves that hit the side of the structure, greatly reducing wave energy within the race course that may be generated by judge and safety motor boats.



Trakai Rowing Stadium, Lithuania



Rowing Stadium, Slatina City, Romania



Nathan Benderson Park, World Class Rowing & Aquatic Sports Centre, Sarasota, US

SPECIAL SOLUTIONS

When you think about floating structures, the only limit is your imagination. The world is full of remarkable examples that were built decades ago but the common denominator for all is the concrete structure. It is the only technology for a proven and long lasting floating solution. Marinetek's Special Solutions come

in many formats - a floating sauna, floating boatshed, floating helipad, floating stage, terraces, over pass bridges and more. Every structure is supported by Marinetek's floating platform, which comes in different sizes and shapes.



Floating Stage, Dubai, UAE



Floating Sauna, Porvoo, Finland



Floating Boat House, Kemiö, Finland

MARINA PRODUCTS

Marinetek has the most extensive product range in the marina construction industry and is a genuine One Stop Shop for Floating Structures. The pontoon range covers all requirements, from light timber pontoons to heavy concrete pontoons and massive breakwaters. A wide selection of accessories and mooring equipment completes the line-up of products, enabling Marinetek to deliver a full turnkey solution for any type of marina.

Marinetek works under ISO 9001, ISO 14001 and has many type approvals to ensure the highest standards.

ALL-CONCRETE & HEAVY DUTY PONTOONS

For boat mooring and general purpose use

Marinetek All-Concrete and Heavy Duty Pontoons represent the latest know-how in pontoon technology and are the most widely used structural concrete pontoon models, favoured for private use as well as for the biggest marinas. Designed for boat mooring in modern marinas and landing stages, fully and heavily reinforced pontoon units are seaworthy, very strong and maintenance-free with a high loading capacity and very long service life. The pontoons are connected by flexible rubber bolt joints, cornerwise and sideways if required, and can create the strongest mooring points for large marinas. The models optimise use of materials to generate an economical but very durable pontoon for any marina. Modules are available in a range of standard sizes 2,4-4,3 m wide and weighing 8-20 ton. The series is offered with a range of optional accessories that can be incorporated

to customise each system. Options include different kinds of decking and cable ducts to carry water, power, grey water and fire mains; and two different fixing systems incorporating universal adjustments for fingers. All floats have a unique anchoring system specifically designed to accommodate Marinetek Mooring System and Seaflex for easy and safe mooring. Chain and pile mooring can also be used. As with all Marinetek concrete systems, All-Concrete and Heavy Duty Pontoons are of exceptionally strong construction with a 50 year design lifetime.

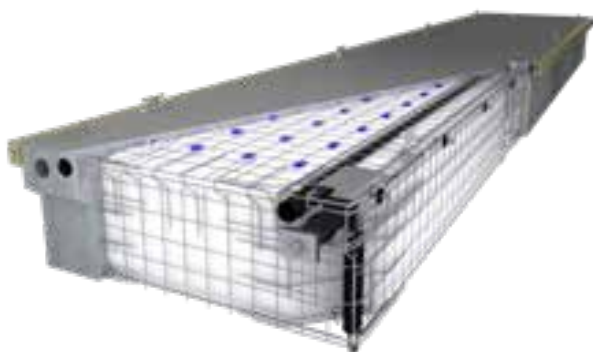


New Port Kalanokka in Finland consists of 3,3 m wide Heavy Duty pontoons, 2,4 m wide All-Concrete pontoons, Mooring Fingers and Boat Booms.



TECHNICAL DATA

- **Concrete strength:** 45 N/mm² steel reinforced plastic fibre concrete. Exposure class according to European EN 206-1 standard
- **Core:** Expanded polystyrene, density 15 kg/m³
- **Reinforcement:** Partly or fully hot dip galvanised steel
- **Optional accessories:** Timber or wood composite deck, fixing rails, finger fixing system, cable ducts and fenders (timber or wood plastic composite)



All-Concrete [AC]



Heavy Duty [HD]

PONTOONS	2400AC	2600AC	3000AC	2700HD	3300HD	4300HD
Width with fenders [m]	2,4	2,6	3,0	2,7	3,3	4,3
Concrete width [m]	2,2	2,4	2,8	2,4	3,0	4,0
Height [m]	0,85	0,85	0,85	0,85	0,85	0,85
Weight [t/m]	0,79	0,84	0,91	0,90	1,02	1,30
Net capacity [kN/m ²]	4,7	4,7	5,0	4,7	5,0	5,0
Freeboard [m]	0,47	0,47	0,50	0,47	0,50	0,50
Strength of joint [kN]	2x180	2x180	2x180	2x322	2x322	2x322
Joint gap [mm]	35	35	35	35	35	35

Exact unit weight and freeboard are subject to detailed specification of the unit, equipment and mooring method. Numbers shown are for standard and unloaded units. Marinetek operates a policy of continuous development and reserves the right to change specifications without notice.

PREMIER & SUPER YACHT PONTOONS

For big boats, super yachts and commercial use

Marinetek Premier and Super Yacht Pontoons offer premium quality to fulfil the highest demands placed by top class marinas and commercial applications when serving the biggest yachts and commercial vessels. Premier and Super Yacht Pontoons are continuous flotation concrete pontoons that offer extreme stability, convenient high freeboard and supersized service channels to accommodate the high service requirements of super yachts. The range includes two different pontoon types: Premier and Super Yacht up to 6 m width fully and heavily reinforced units and 62 ton displacement and can incorporate a central service channel as an option. They are designed for the largest marinas, public concourses and overpass bridges and are suitable for powered hospitality carts. Pontoons provide unprecedented high standards of floating berth facilities for big boats and super yachts. Wide walkways

can be utilised in a Mediterranean Mooring arrangement or with Super Yacht Fingers. Top entry service channels run along both sides of the pontoons as an option. Pontoons are extremely strong and need hardly any maintenance. The Marinetek Mooring System and Seaflex mooring arrangement is as standard for easy and safe mooring and chain and pile mooring can also be used. As with all Marinetek concrete systems, Premier and Super Yacht Pontoons are of exceptionally strong construction with a 50 year design lifetime.

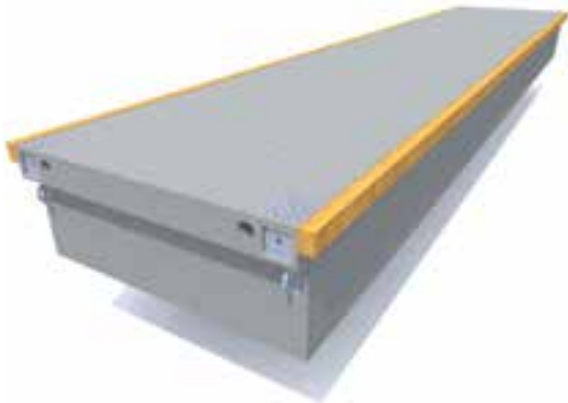


Marina in Abu Dhabi consists of Super Yacht and Premier Pontoons with Super Yacht Fingers.

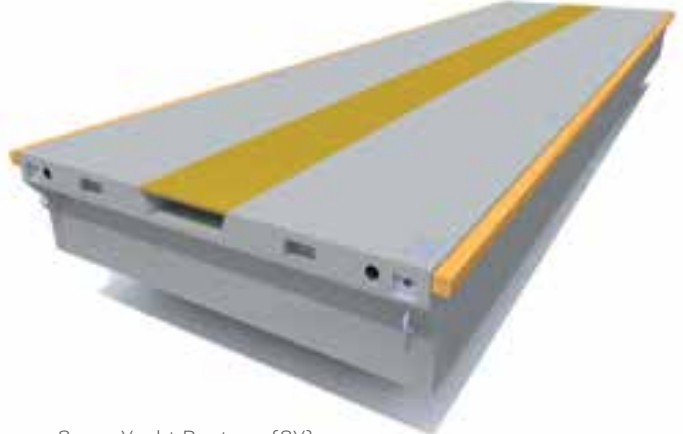


TECHNICAL DATA

- **Concrete strength:** 45 N/mm² steel reinforced plastic fibre concrete. Exposure class according to European EN 206-1 standard
- **Core:** Expanded polystyrene, density 15 kg/m³
- **Reinforcement:** Partly or fully hot dip galvanised steel
- **Optional accessories:** Timber or wood composite deck, fixing rails, finger fixing system, cable ducts, service channels (350x250 or 800-1 000x250 mm) and fenders (timber or wood plastic composite)



Premier Pontoon [PE]



Super Yacht Pontoon [SY]
Also available 4300CM and 5300CM series
Commercial Pontoons with 1 m high freeboard.

PONTOONS	2700PE	3300PE	3800SY	4300SY	4800SY	5300SY	6300SY
Width with fenders [m]	2,7	3,3	3,8	4,3	4,8	5,3	6,3
Concrete width [m]	2,4	3,0	3,5	4,0	4,5	5,0	6,0
Height [m]	1,0	1,0	1,2	1,2	1,2	1,2	1,2
Weight [t/m]	1,10	1,25	1,80	1,96	2,30	2,50	3,03
Net capacity [kN/m ²]	5,5	5,8	6,7	6,7	6,7	6,7	6,7
Freeboard [m]	0,55	0,58	0,67	0,67	0,67	0,67	0,67
Strength of joint [kN]	2x322	2x322	2x703	2x703	2x703	2x703	2x703
Joint gap [mm]	35	35	35	35	35	35	35

Exact unit weight and freeboard are subject to detailed specification of the unit, equipment and mooring method. Numbers shown are for standard and unloaded units. Marinetek operates a policy of continuous development and reserves the right to change specifications without notice.

BREAKWATER PONTOONS

For floating wave attenuators and heavy industrial use

Nothing has been more thoroughly researched at Marinetek over the past 20 years than its series of Breakwaters. These world famous wave attenuator pontoons have been installed all over the world. Breakwaters, now in third generation, have often been installed in the harshest environments. No single unit has ever failed and in some cases the Marinetek Breakwater has been the only pontoon to withstand the test. In Praia da Vitoria in the Azores, after the tropical storm Tanya had raged for two days, the Marinetek Breakwater was the only pontoon still in place. This kind of exceptional strength, coupled with excellent wave attenuation, is a design achievement resulting from technical research undertaken worldwide. Tank testing, theoretical calculations and field tests have been the norm. Results are impressive - the third generation breakwater has approximately 30 % better wave attenuation than

competitive products. Justifiably proud of the effectiveness of its system, Marinetek is the only breakwater manufacturer in the world to publish wave attenuation diagrams with proper research for its different breakwater models. Breakwaters reduce the wave height and strength by directly deflecting some of the energy and dissipating smaller amounts by friction and turbulence. The main technical parameters, i.e. width, height, weight and moment of inertia, are selected for maximum attenuation capacity. The connection between the pontoon units is semi-flexible with sufficient rigidity to enable the breakwater to work at its highest capacity. Marinetek Mooring System secures the best performance of Breakwaters.



3800-series Breakwater is protecting Holly Loch Marina in Scotland.

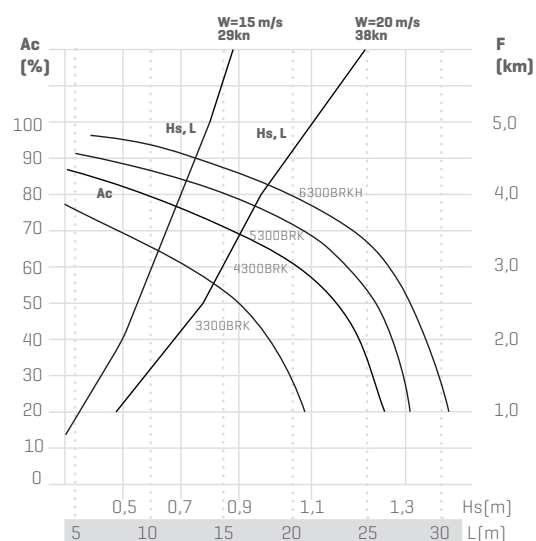


TECHNICAL DATA

- **Concrete strength:** 45 N/mm² steel reinforced plastic fibre concrete. Exposure class according to European EN 206-1 standard
- **Core:** Expanded polystyrene, density 15 kg/m³
- **Reinforcement:** Partly or fully hot dip galvanised steel
- **Optional accessories:** Timber or wood composite deck, fixing rails, finger fixing system, cable ducts and fenders (timber or wood plastic composite)

WAVE ATTENUATION CAPACITY

Sheltered sea conditions



F=Effective fetch length. **W**=Wind velocity. **L**=Wave length.
Hs=Significant wave height. **Ac**=Wave attenuation capacity.



4300BRK-series Breakwater Pontoon (BRK)

PONTOONS	3300BR	3800BR	3300BRK	4300BRK	5300BRK	6300BRKH
Width with fenders [m]	3,3	3,8	3,3	4,3	5,3	6,3
Concrete width [m]	3,0	3,5	3,0	4,0	5,0	6,0
Height [m]	1,0	1,2	1,8	1,8	1,8	2,4
Weight [t/m]	1,29	1,96	1,71	2,04	2,62	3,7
Net capacity [kN/m ²]	5,5	6,2	5,5	6,0	6,0	7,0
Freeboard [m]	0,55	0,62	0,55	0,60	0,60	0,7
Strength of joint [kN]	2x703	2x812	2x812	2x812	2x812	2x812
Joint gap [mm]	90	90	90	90	90	90

Exact unit weight and freeboard are subject to detailed specification of the unit, equipment and mooring method. Numbers shown are for standard and unloaded units. Marinetek operates a policy of continuous development and reserves the right to change specifications without notice.

ALUMINIUM PONTOONS

For boat mooring and general purpose use

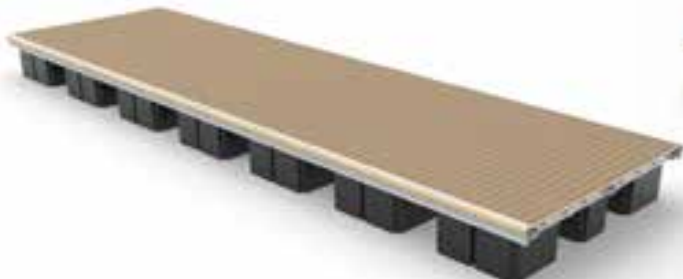
When the client's requirements call for lighter materials, Marinetek has its own aluminium range of pontoons and mooring fingers. In today's market, there are several dock manufacturers to choose from. Some docks manufacturer may cost less initially and seem more attractive, but in time they may rack up maintenance expenses, labor, part replacement and valuable time. At Marinetek, there is no compromise, we only use high strength marine grade aluminum alloy 6061-T6, extra strong extrusion with unique single or double track system for easy marina reconfigurations, all reinforced with easy access utility troughs on each side. Our unique aluminum system can also be combined with our unique hybrid technology replacing poly-floats with high stability concrete floats.





TECHNICAL DATA

- **Structure:** Welded frame 6000 aluminum alloy extrusion
- **Manufacturing:** Welding conform to CSA W47.2 and ANSI/AWS D1.2 standards
- **Decking:** 25mm x 138mm nominal decking
Softwood, Hardwood, Composite or Concrete panel
- **Fenders:** Softwood, Hardwood, Composite, PVC and EPDM
- **Floats:** Concrete floats M140N, M200N or M300N: Strength 45 N/mm² fiber reinforced concrete, exposure class according to European EN 206-1 standard.
- **Polyethylene floats:** Polyethylene shell 5mm nominal filled with expanded polystyrene [EPS] at 15 kg/m³
- **Connection:** Noise free rubber connection [Flexblock]
- **Cleats:** 305mm or 406mm cleat model
Aluminum alloy AA356
- **Hardware:** All hardware are made of stainless steel
- **Service trough:** Under deck, small trough [150mm] or large trough [300mm]



Aluminium pontoon with polyethylene floats



Aluminium pontoon with concrete floats

ALUMINIUM PONTOONS	180 SERIES	220 SERIES	260 SERIES
Width with Fenders [m]	From 1,07 m to 3,1 m	From 1,07 m to 3,60 m	From 1,60 m to 4,10 m
Width [m]	From 0,97 m to 3,00 m	From 0,97 m to 3,50 m	From 1,50 m to 4,00 m
Height [m]	0,18 M	0,22 m	0,26 m
Weight [kg/m ²]	Approx. 40 Kg/m ²	Approx. 50 kg/m ²	Approx. 65 kg/m ²
Net capacity [Kg/m ²]	From 100 kg/m ² to 200 kg/m ²	from 125 kg/m ² to 250 kg/m ²	from 145 kg/m ² to 300 kg/m ²
Freeboard [m]	From 0,30 m to 0,55 m	from 0,40 m to 0,70 m	from 0,50 m to 0,80 m
Boat Range	from 5 m to 13,5 m long	From 12 m to 22 m long	20 m and longer

In addition to the above sizes, elements of special dimensions and capacities are also available. Exact unit weight and freeboard are subject to detailed specification of the unit, equipment and mooring method. Numbers shown are for standard and unloaded units. Marinetek operates a policy of continuous development and reserves the right to change specifications without notice.

SYSTEM PONTOONS

For boat mooring, private use and general purpose use

Always popular, especially with smaller marinas in sheltered waters, the Marinetek System Pontoon range is more than just a traditional choice – it's surprisingly versatile, easily customised, light to transport, simple to install and extremely cost effective. These timber Pontoons are offered in different versions for boat moorings, swimming pontoons and general purpose use. Customers can choose exactly what they want, in terms of pontoon length and loading capacity, and extend or modify the arrangement according to the shape or berthing capacity required even after installation. Timber frames are manufactured from treated Nordic pine, famed for its flexibility. Systems with concrete floats are assembled using prefabricated timber-framed deck elements to create a continuous rigid structure. The new concrete floats are available in two sizes and have been designed to meet the

latest norms. Pontoons with plastic tubes also use prefabricated elements and are connected by flexible rubber bolt joints. The different optional plastic tubes offer varied freeboard options. Different float options and frame constructions and a choice of pontoon mooring methods – Marinetek Mooring System, chain, pile or Seaflex – provide considerable options to meet many different needs and budgets. As for all Marinetek systems, further customisation is also available.



The world famous Peterhof Palace in St. Petersburg, Russia has an overpass bridge made of System 241 timber pontoons.



TECHNICAL DATA

- **Concrete floats M200N and M300N:** strength 45 N/mm² fibre reinforced concrete, exposure class according to European EN 206-1 standard
- **Plastic tube float T400:** Polyethylene
- **Frame:** Treated pine
- **Decking:** Treated and grooved pine
- **Optional accessories:** Cable tray and fenders (timber or wood plastic composite)



System 2400T



System 242

SYSTEM PONTOONS	2400T	200	241	242	300
Width with fenders [m]	2,5	2,1	2,5	2,5	3,1
Width [m]	2,4	2,0	2,4	2,4	3,0
Height [m]	0,7	0,86	0,86	0,87	0,87
Weight [t/m]	0,10	0,24	0,25	0,30	0,38
Net capacity [kN/m ²]	0,60	1,25	1,00	1,40	1,00
Freeboard [m]	0,45	0,52	0,52	0,56	0,56

In addition to the above sizes, elements of special dimensions and capacities are also available. Exact unit weight and freeboard are subject to detailed specification of the unit, equipment and mooring method. Numbers shown are for standard and unloaded units. Marinetek operates a policy of continuous development and reserves the right to change specifications without notice.

EQUIPMENT & SERVICES

Boat Mooring, Bollards, Safety Equipment, Bridges

Our portfolio of equipment includes mooring finger piers, mooring bollards, access bridges, safety equipment, power pedestals, buoys, fenders and more.

Marinetek provides professional services for the every stage of a marina life cycle, from early conceptual sketches and marina optimisation engineering and anchoring systems to complete turnkey marina projects and after sales services.



1. Concrete Fingers provide the strongest and most convenient mooring for large yachts. Being very stable, they offer safe and easy mooring, comfortable wide access and high load capacity. Concrete Fingers come in different length, widths and freeboards and share the same construction process as Marinetek's Premier and Super Yacht Pontoons.

2. - 4. Mooring Fingers have been designed according to Australian Standards and are very strong and stable, making them ideal for demanding solutions. They have either a steel or aluminium frame and are fitted to the pontoon by rubber-bolt joints and adapters to match different pontoon types. Standard lengths range from 6 to 18 m. Fingers are decked with either treated soft wood or wood plastic composite and have plastic fenders at the top edges.

For aluminium Mooring Fingers we only use high strength marine grade aluminum alloy 6061-T6, extra strong extrusion with unique single or double track system for easy marina reconfigurations, all reinforced with easy access utility troughs on each side. Our unique aluminum system can also be combined with our unique hybrid technology replacing poly-floats with high stability concrete floats.

5. Boat Booms are light in weight, have a single hot-dipped galvanised steel tube frame and are 4,5-8 m long. A decking option is available of treated soft wood or wood plastic composite. The booms are inexpensive and designed for easy, safe mooring of small boats in sheltered marinas. The plastic floats are filled and rotation moulded, and are offered in two different designs.

6. Our large variety of standard **Access Bridges** come in 4-20m lengths and widths of 1,2-2,4m. They are built from aluminium, hot-dipped galvanised steel or treated timber and are decked in either softwood or wood plastic composite. In addition to standard bridges, Marinetek provides customised designs to meet local regulations and customer needs.



Caroline Bay Marina in Bermuda has Marinetek aluminium walkway pontoons with concrete floats and aluminium mooring finger piers with polyethylene floats.



MARINETEK CORPORATION

Marinetek is an internationally recognised brand name for premium marinas and advanced floating solutions. With the industry's most comprehensive pontoon product range and a network of 300 marina experts around the world, Marinetek can supply everything, from a custom-made floating structure to a world-class marina. Through collaborative partnerships, Marinetek offers customers expert turnkey services for design, manufacture, installation, maintenance and modernisation of marinas. By operating through its subsidiaries and partners around the world and manufacturing in 12 countries, Marinetek has been able to deliver more than 2 000 marinas in just 20 years. The company's international

success is based on its exclusive concrete technology and the Marinetek team realises above all that by accelerating the pace of new product development it can continue to give its worldwide customers the best. Every year Marinetek reviews and develops the product range to bring the most suitable marina solutions to the market. This ongoing development has brought Marinetek many awards and ensured its status as the biggest marina construction company in Europe and one of the leaders in the whole global industry. More than marinas, Marinetek delivers peace of mind for decades to come.



Regional Head Offices

Marinetek North America

+1877 909 3625 · info@marinetek.us

Marinetek Middle East

+971 4 881 7090 · info.mea@marinetek.net

Marinetek Mediterranean

+385 22 312 960 · info.med@marinetek.net

Marinetek South East Asia

+65 9092 0305 · info.sea@marinetek.net

Marinetek North Europe

+358 9 682 4100 · info@marinetek.net

Sales Offices

BALTIC COUNTRIES

Marinetek Latvia
+371 292 10 966
danat.marinetek@inbox.lv

CANADA

Marinetek North America
+1 877 909 3625
info@marinetek.us

CROATIA

Marinetek Adriatic
+385 22 312 960
info.med@marinetek.net

CYPRUS

Marinetek Cyprus
+357 248 155 91
erik.malinen@marinetek.net

DENMARK

CC-Design
+45 65 32 33 96
cc@ccdesign.dk

EGYPT

Marina d'Egypte
+20 12 214 6041
info@montazah.com

FINLAND

Marinetek Finland
+358 9 682 4100
info.finland@marinetek.net

GERMANY

Ostseedienst
+49 4642 92596 0
info@ostseedienst.de

HONG KONG

Marinetek Hong Kong
+852 9320 9671
desmond.chan@marinetek.net

INDIA

Marinetek India
+91 98 211 672 53
india@marinetek.net

IRELAND

Intermarine
+44 17 9452 1043
pontoons@intermarine.co.uk

MALAYSIA

Marinetek South East Asia
+65 909 20 305
info.sea@marinetek.net

NORWAY

Marinetek Sweden
+46 5 284 02 70
info.sweden@marinetek.net

NETHERLANDS

JLD International
+31 299 622396
info@jldinternational.com

POLAND

Karos
+48 89 762 66 91
karos@karos.com.pl

ROMANIA

Marinetek BSM
+40 341 710 680
info.bsm@marinetek.net

RUSSIA

Marinetek SPB
+7 812 6001 809
russia@marinetek.net

SINGAPORE

Marinetek South East Asia
+65 909 20 305
info.sea@marinetek.net

SWEDEN

Marinetek Sweden
+46 5 284 02 70
info.sweden@marinetek.net

THAILAND

Marinetek South East Asia
+66 8 4841 0239
info.sea@marinetek.net

SOUTH KOREA

Marinetek South Korea
+82 10 4226 5343
rhranta@naver.com

UAE

Marinetek Middle East & Asia
+971 4 881 7090
info.mea@marinetek.net

UK

Intermarine
+44 17 9452 1043
pontoons@intermarine.co.uk

USA

Marinetek North America
+1 877 909 3625
info@marinetek.us

OTHER COUNTRIES

Marinetek Group
+358 9 682 4100 · info@marinetek.net



For more information visit marinetek.net

**MORE THAN MARINAS,
WE DELIVER PEACE OF MIND
FOR DECADES TO COME**

MARINETEK 

Vattuniemenkatu 3 | 00210 Helsinki, Finland
+358 9 682 4100 | info@marinetek.net
marinetek.net